



EDENROC
RESIDENCE





Eden Roc

The Eden Roc Residence is a luxury residential complex in central Limassol, in a privileged and quite neighborhood of the tourist area, approximately half a kilometre from the seafront. The building reaches up to 8 storeys in height; The units wrap around a formal garden in the centre and are set within generous landscaped grounds all around.

The design is influenced by elements from both the natural and man-made world. Reminiscent of a superyacht, the superstructure of each block gently terraces down from its

highest point with balconies on all sides. Wide horizontal bands form continuous balustrades that wrap around the blocks at each level, emphasizing the horizontal nature of the development which stretches to over 300 linear metres in length. The residents will enjoy the privacy of the gated compound with extended hotel-type facilities including concierge, SPA (sauna, jacuzzi and steam bath), outdoor pool, heated indoor pool, gym, landscaped gardens, playground for kids and club house with a play room.

Major benefits

- Landmark architecture from one of London's leading architects
- 500 meters from sandy beach and city amenities of Limassol's tourist area
- Sea views from floors 6 & 7
- Gated compound with CCTV security
- Extended hotel-type facilities: outdoor pool, half-Olympic size indoor heated pool, SPA (sauna, jacuzzi and steam bath), concierge, play room, club house, underground parking, large outdoor gardens, gym, playground for kids
- Large balconies with private planters and green areas
- Penthouses with private pools
- Apartments with private gardens
- Spacious duplexes and triplexes serving as a good alternative to a villa
- Triplexes with private basements and lifts
- High ceilings (3.15 meters net)
- High standard finishes (parquet floors, high doors of 2.4 m, security entrance doors, thermal aluminum window frames, top standard in-built furniture, sanitary ware)
- Provision for water underfloor heating and VRV air conditioning











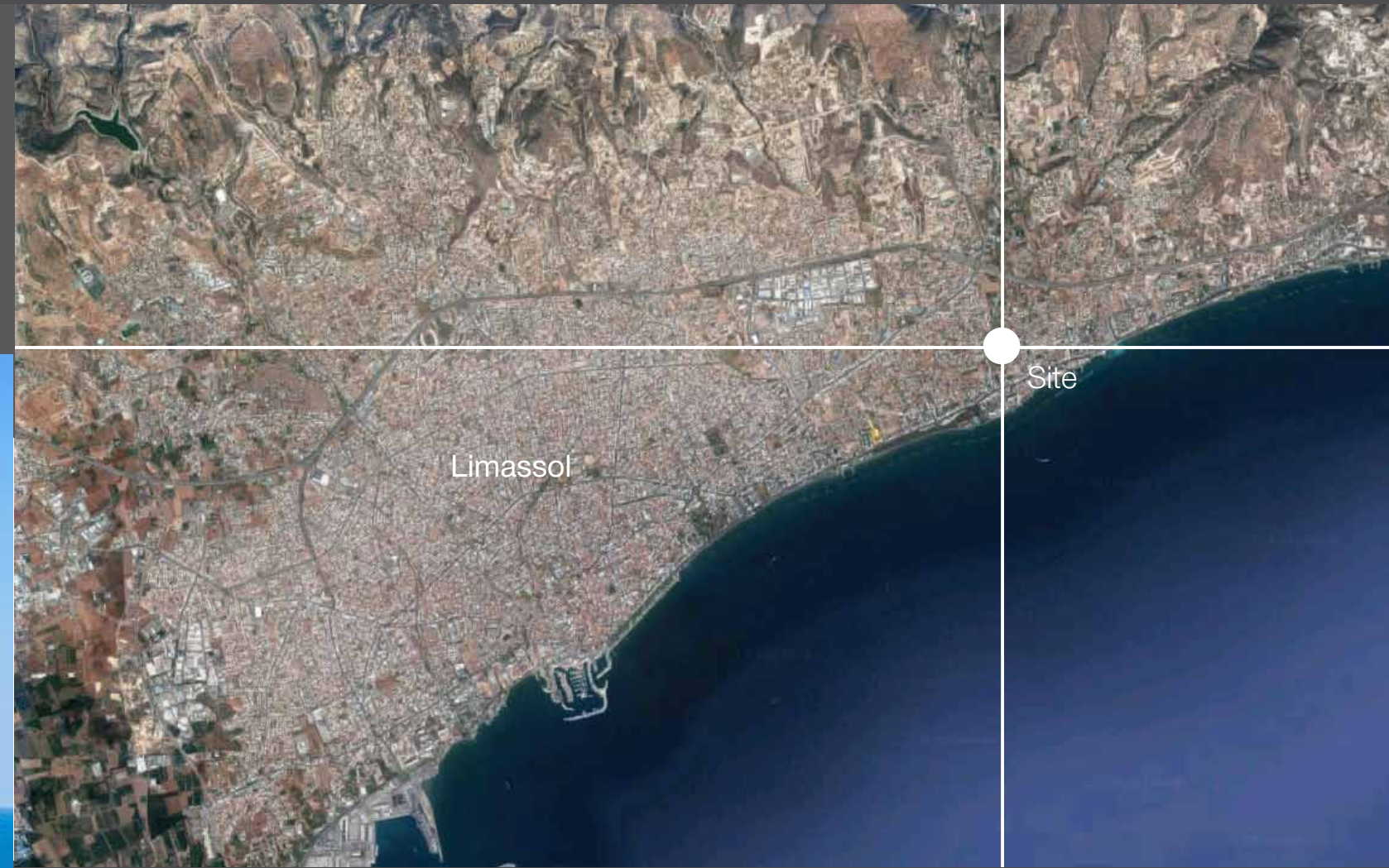
Location

Limassol is known as the city for everyone. It is the second largest and by far the most flourishing city in Cyprus. It combines the fast pace of a city and the comfort of a firstclass Mediterranean resort.

The city offers a diverse variety of pleasures such as the dynamic metropolitan city for business, infinite sandy beaches, interesting historical sites, restaurants with all sorts of food for the most sophisticated gour-

nets, and the shopping areas; you'll find it all and much more in Limassol!

The project is nestled in a carefully selected, quiet and safe neighborhood of the prestigious Potamos Germasogeia area of Limassol, just 500 meters away from the best sandy beaches of the tourist area and Limassol's best leisure spots, banks, pharmacies and food stores.



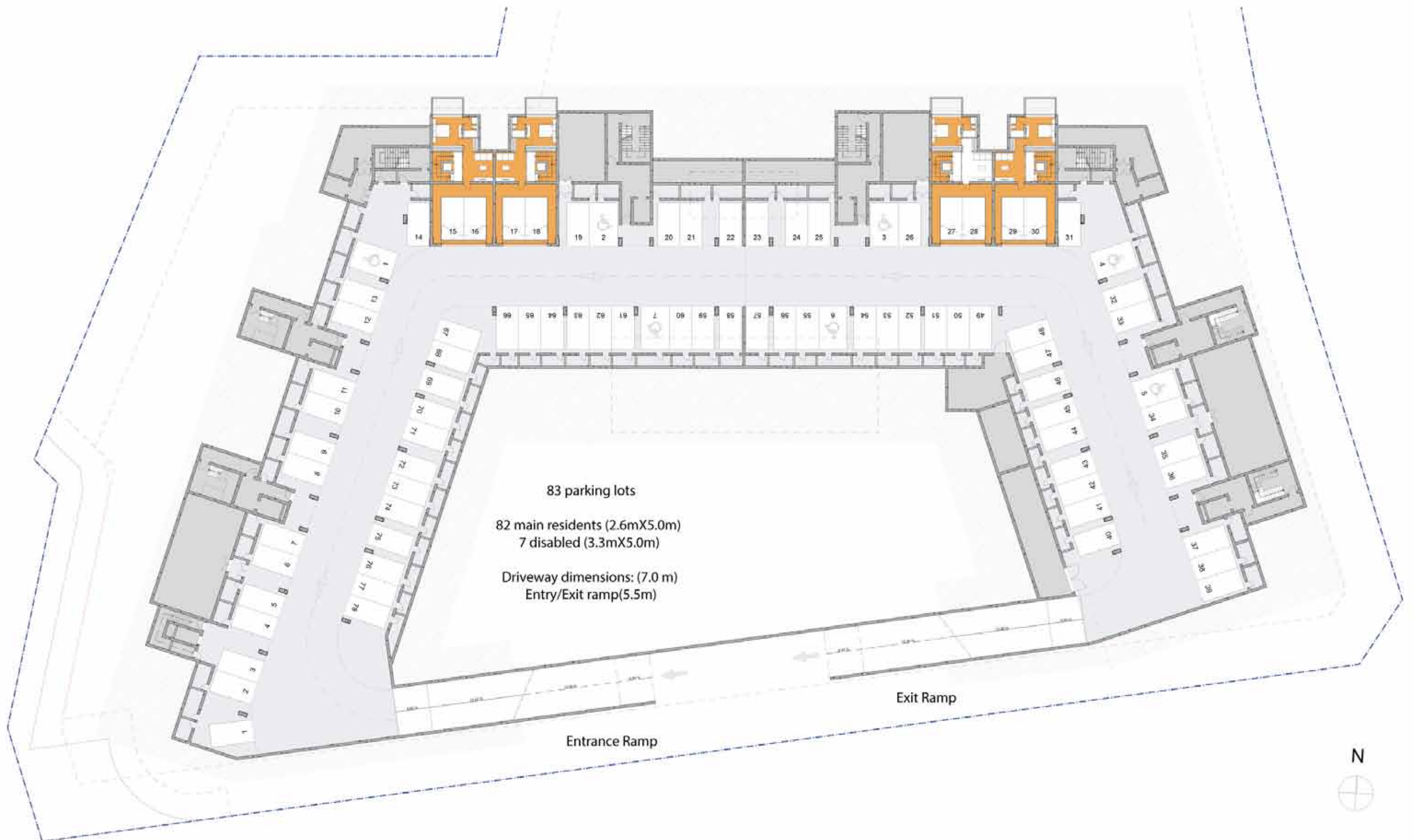
Sea view from floors 6 & 7



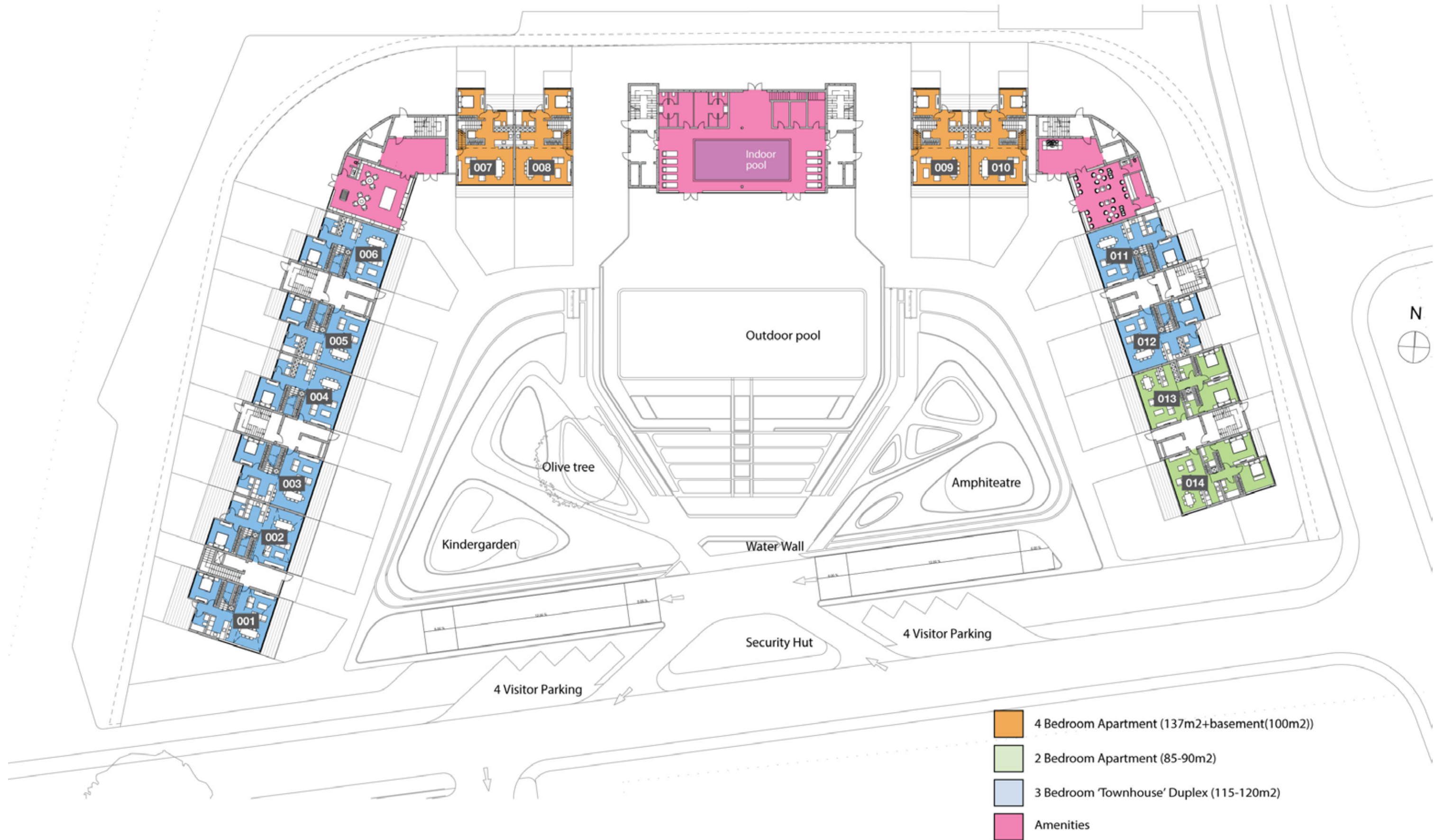
Numbering of units



Plot A - Parking
Basement 1

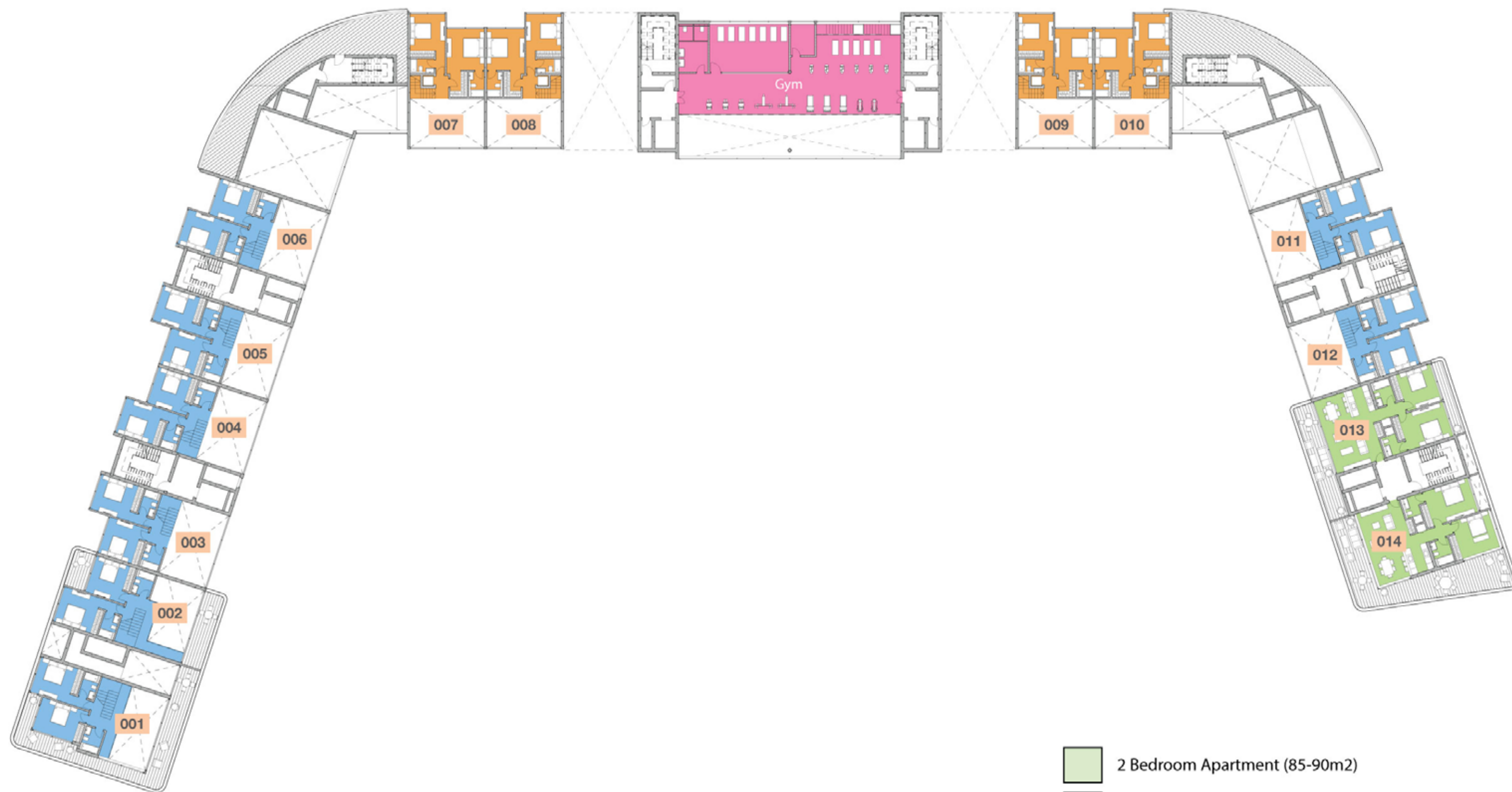





Plot A - Floor plan
Ground Floor



Plot A - Floor plan

1st Floor



-  2 Bedroom Apartment (85-90m²)
-  3 Bedroom 'Townhouse' Duplex (115-120m²)
-  Amenities



Plot A - Floor plan

2nd Floor



Plot A- Floor plan

3rd Floor



- 2 Bedroom Apartment (85-90m²)
- 3 Bedroom Apartment (115-120m²)
- 3 Bedroom Penthouse (115-120m²)
- 4 Bedroom Apartment - Type 02



Plot A - Floor plan

4th Floor






- 2 Bedroom Apartment (85-90m²)
- 3 Bedroom Apartment (115-120m²)
- 3 Bedroom Penthouse (115-120m²)



Plot A- Floor plan

5th Floor





-  3 Bedroom Apartment (115-120m2)
-  3 Bedroom Penthouse (115-120m2)
-  4 Bedroom Apartment - Type 01



Plot A - Floor plan

6th Floor





-  3 Bedroom Apartment (115-120m²)
-  3 Bedroom Penthouse (115-120m²)



Plot A - Floor plan

7th Floor

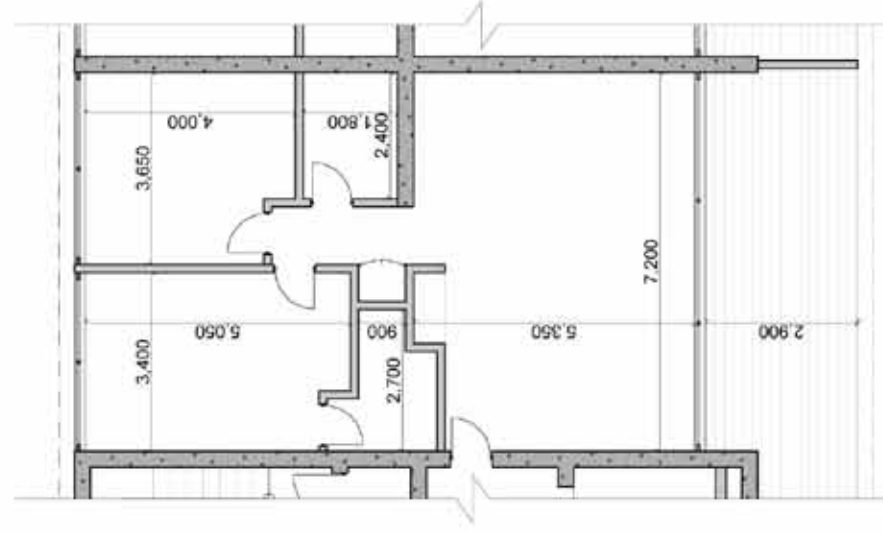


-  3 Bedroom Penthouse (115-120m²)
-  4 Bedroom Penthouse (200m²)

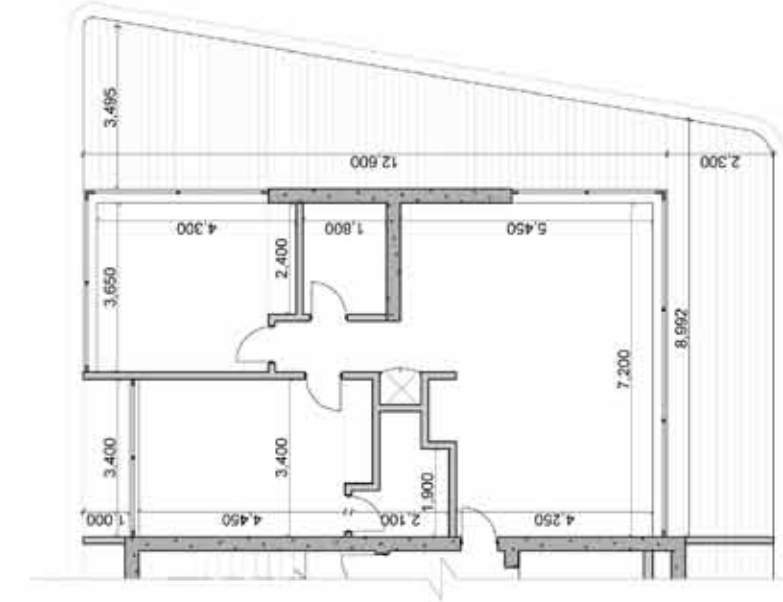




Apartment Typology
 2 Bedroom Apartment - Type 1
 013/113/202/203/204/205/212/213/214
 215/302/303/310/311/312/313/408/409
 AREA: 90m² + COVERED BALCONY

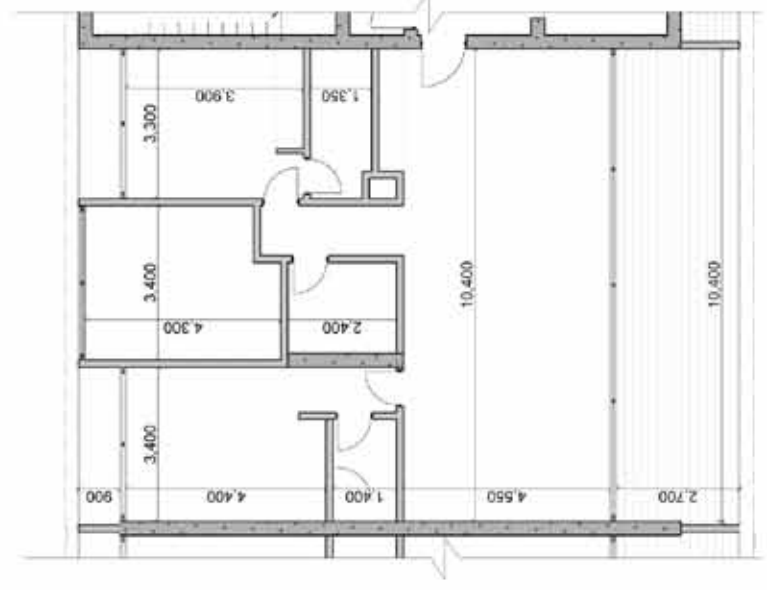


Apartment Typology
 2 Bedroom Apartment - Type 2
 014/114
 AREA: 93m² + COVERED BALCONY

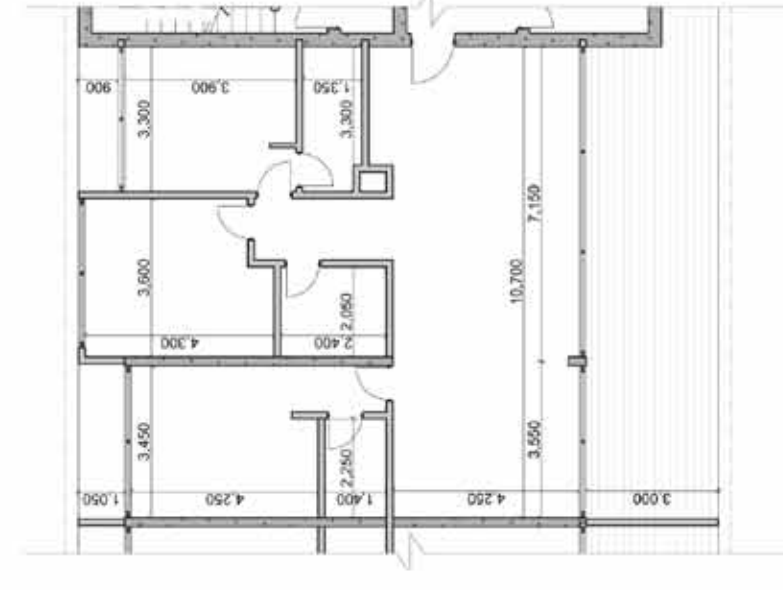




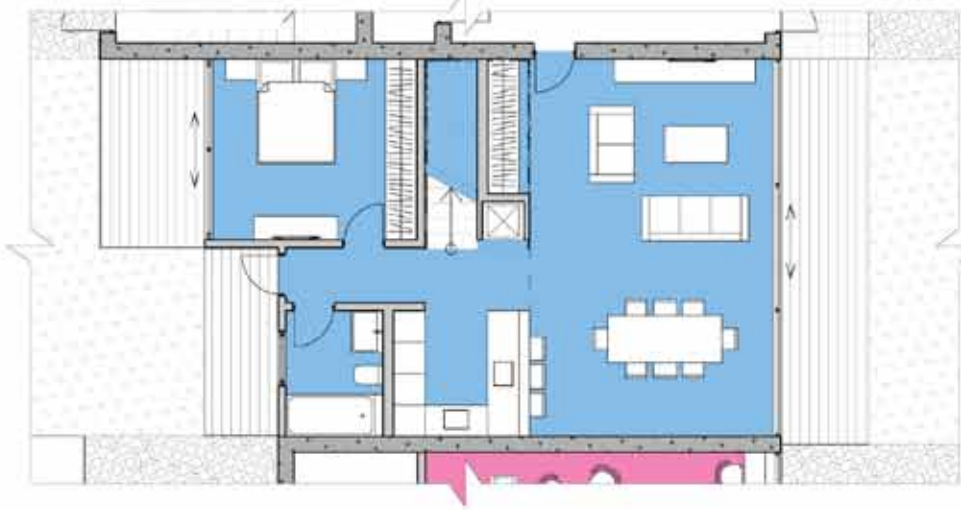
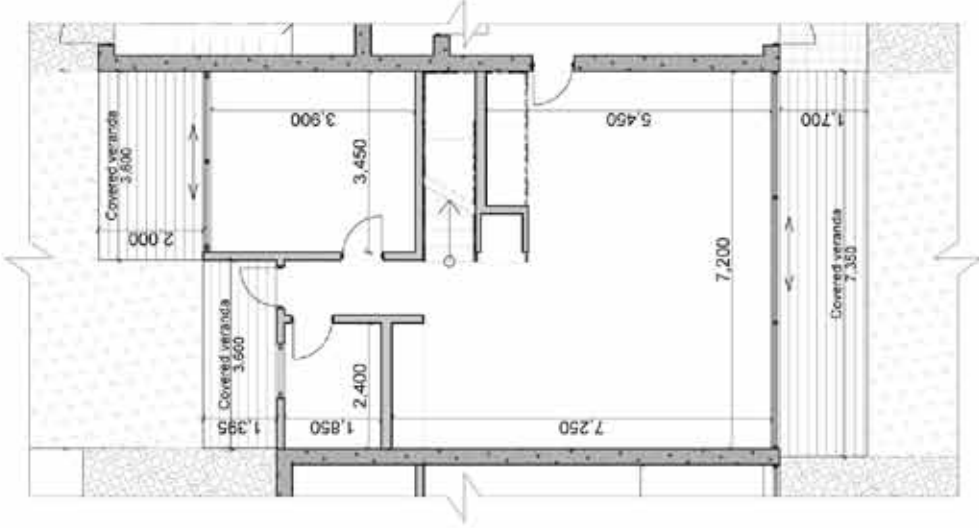
Apartment Typology
 3 Bedroom Apartment - Type 1A
 208/209/306/307/404/405/502/503
 AREA: 120m² + COVERED BALCONY



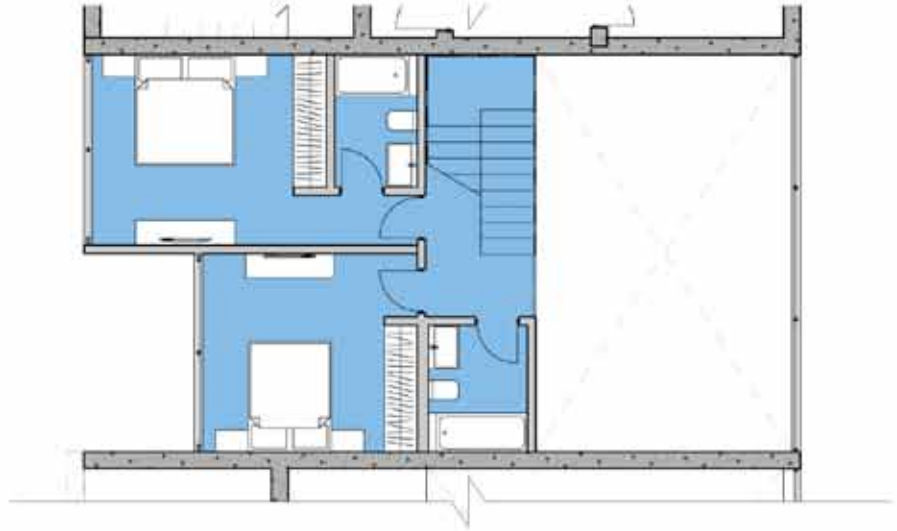
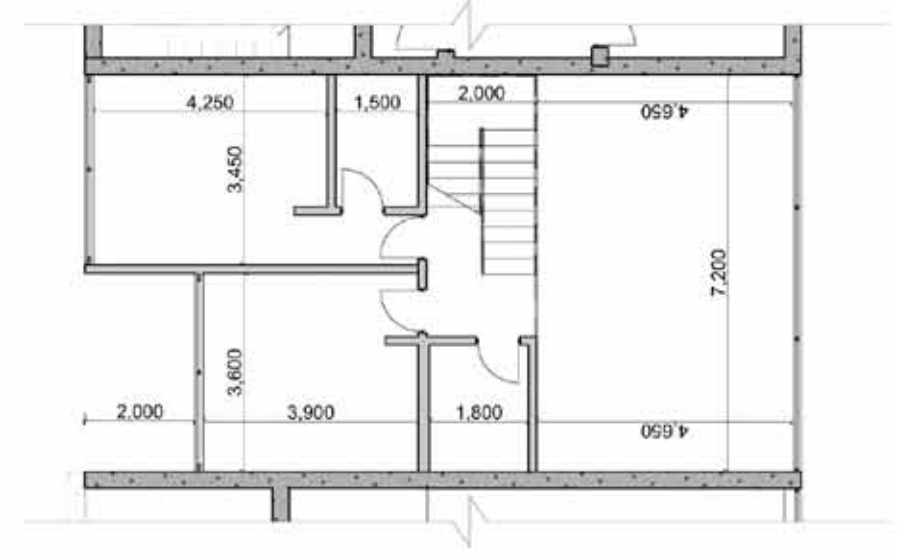
Apartment Typology
 3 Bedroom Apartment - Type 1B
 206/207/210/211/304/305/308/309
 402/403/406/407/504/505/602/603
 AREA: 120m² + COVERED BALCONY

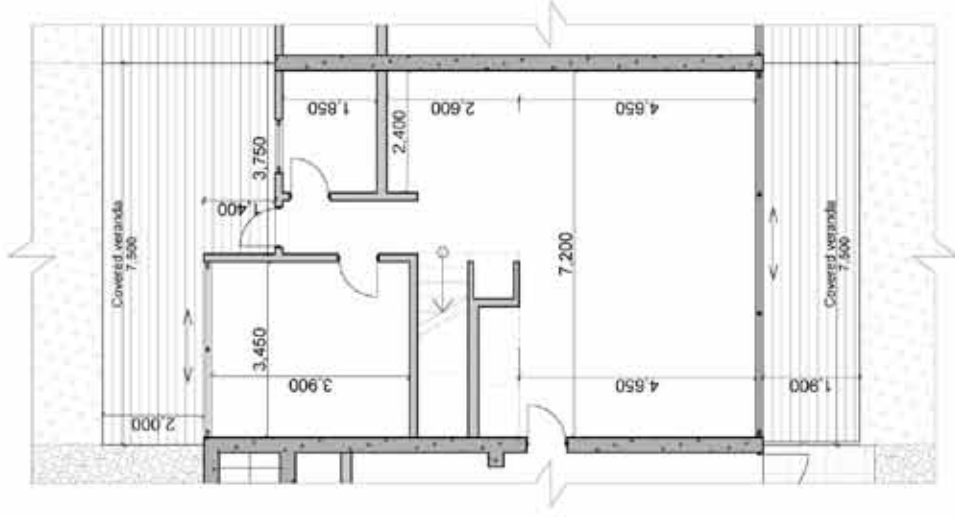


Apartment Typology
 3 Bedroom Townhouse Type 1 (Lower Floor)
 003/004/005/006/011/012
 AREA: 77.25m²

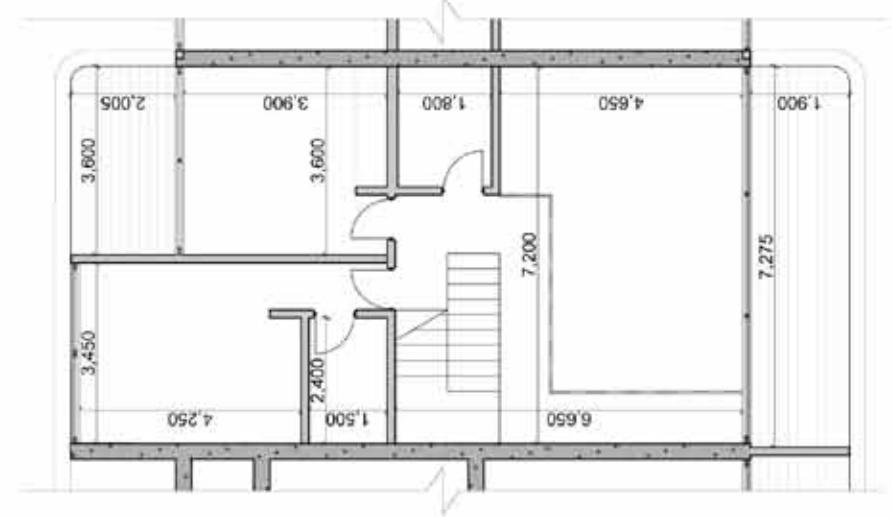
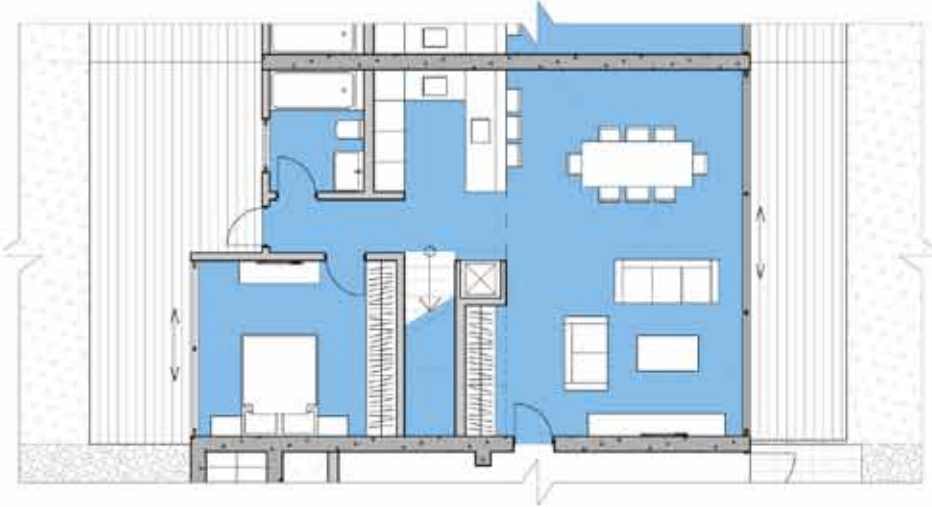


Apartment Typology
 3 Bedroom Townhouse Type 1 (Upper Floor)
 003/004/005/006/011/012
 Area: 54m²

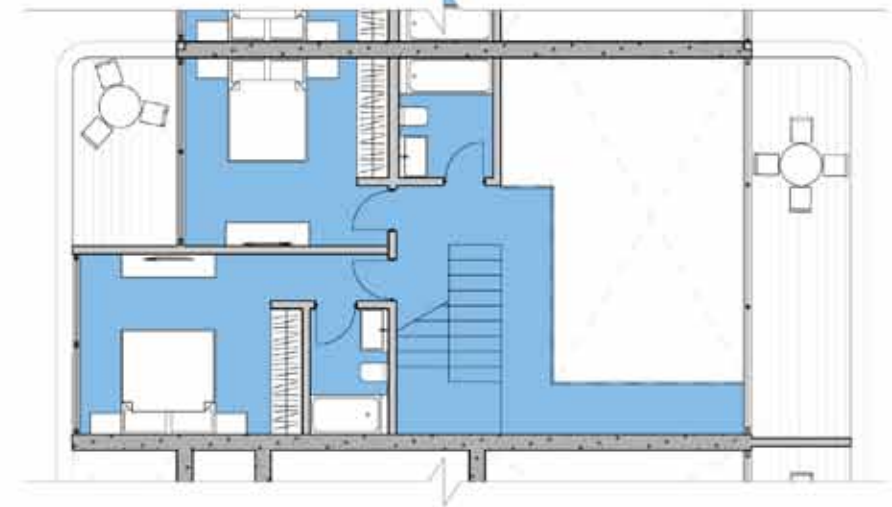




Apartment Typology
3 Bedroom Townhouse Type 2 (Lower Floor)
002
Area: 77.25m²



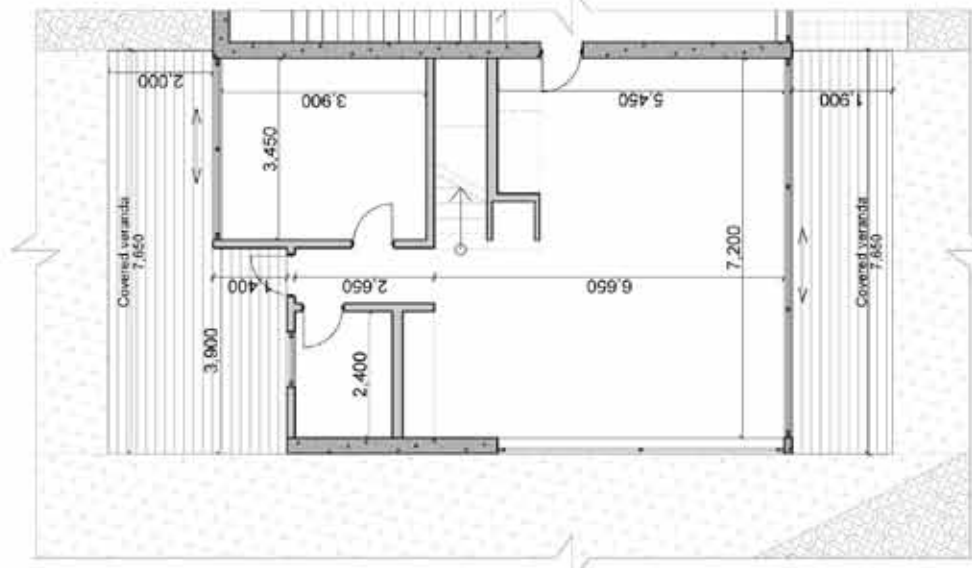
Apartment Typology
3 Bedroom Townhouse Type 2 (Upper Floor)
002
Area: 64.3m²



Apartment Typology
3 Bedroom Townhouse Type 3 (Lower Floor)

001

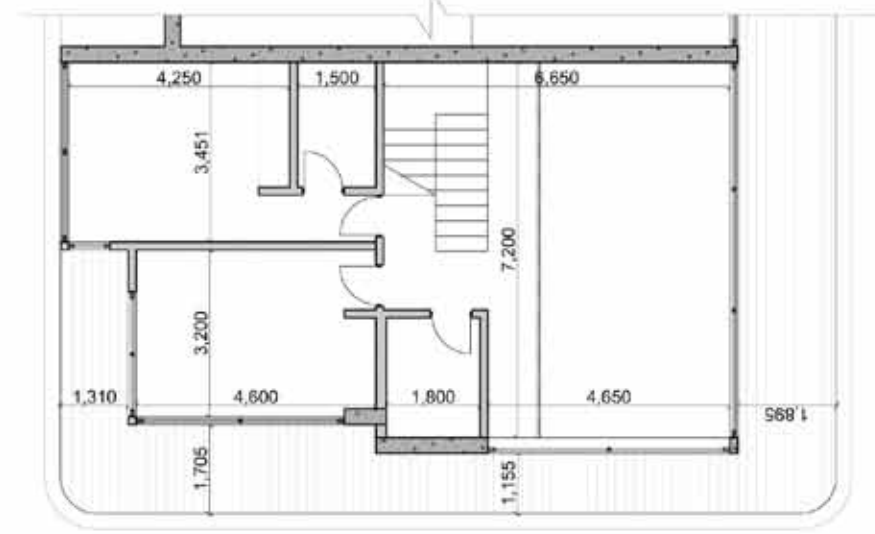
Area: 77.25m²



Apartment Typology
3 Bedroom Townhouse Type 3 (Upper Floor)

001

Area: 63.5m²

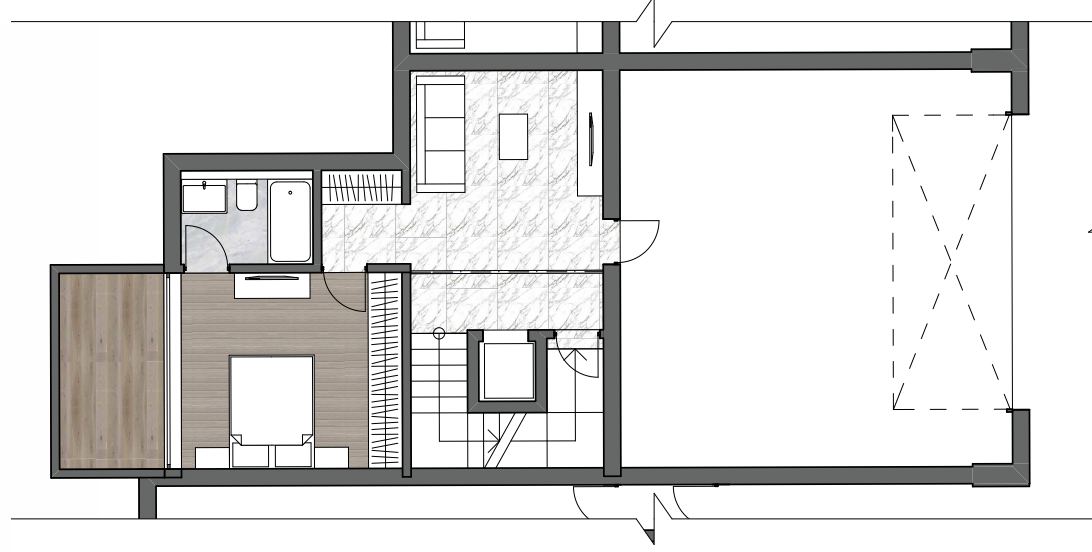
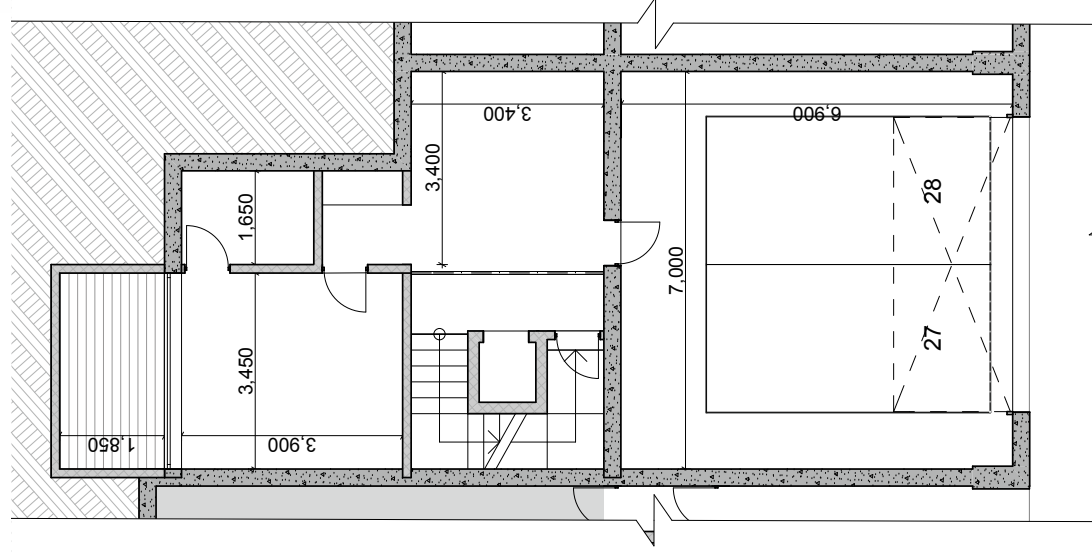
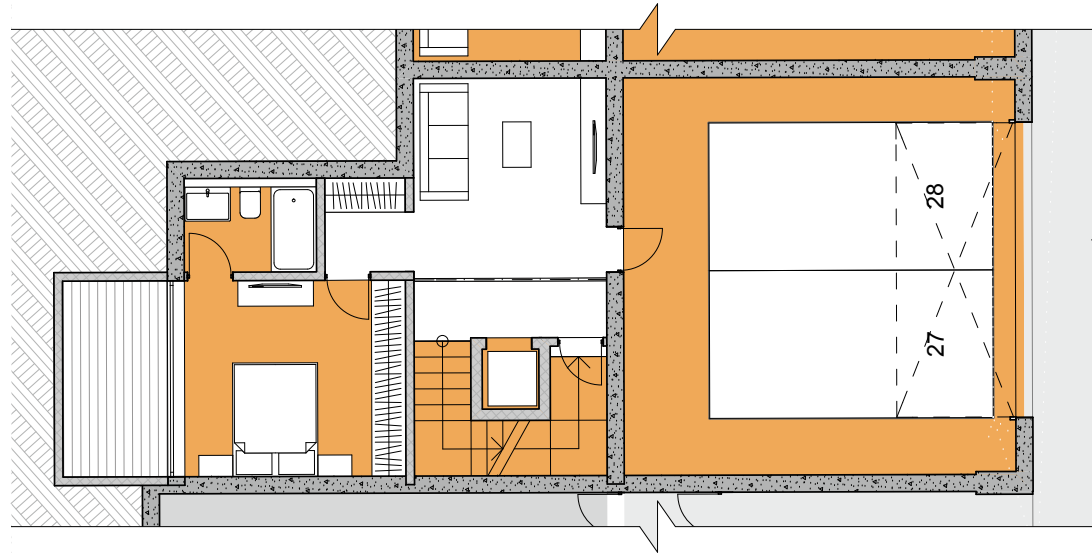




Apartment Typology
4 Bedroom Townhouse (Basement Floor)

007/008/009/010

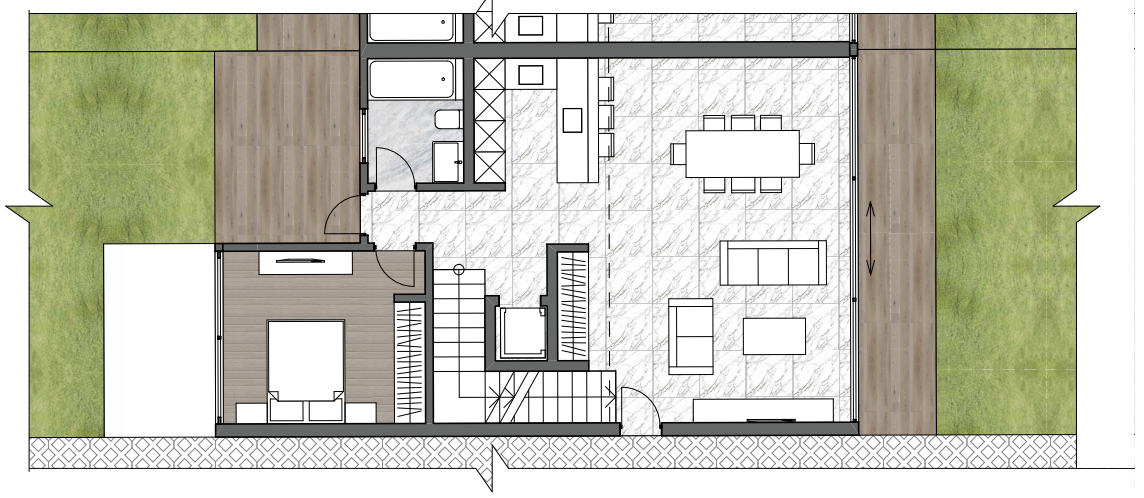
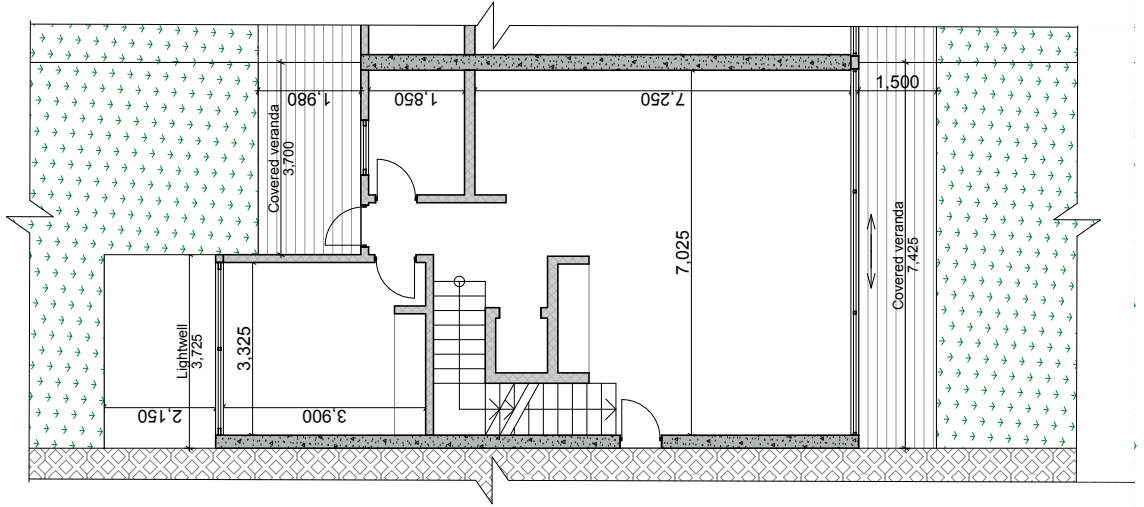
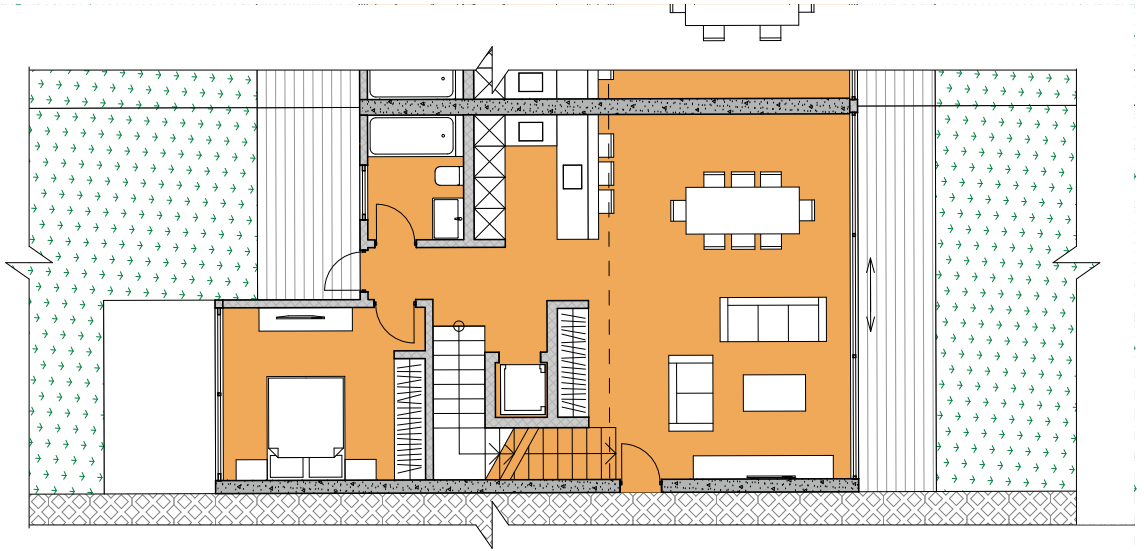
Area: 100.4m²



Apartment Typology
4 Bedroom Townhouse (Ground Floor)

007/008/009/010

Area: 82m²

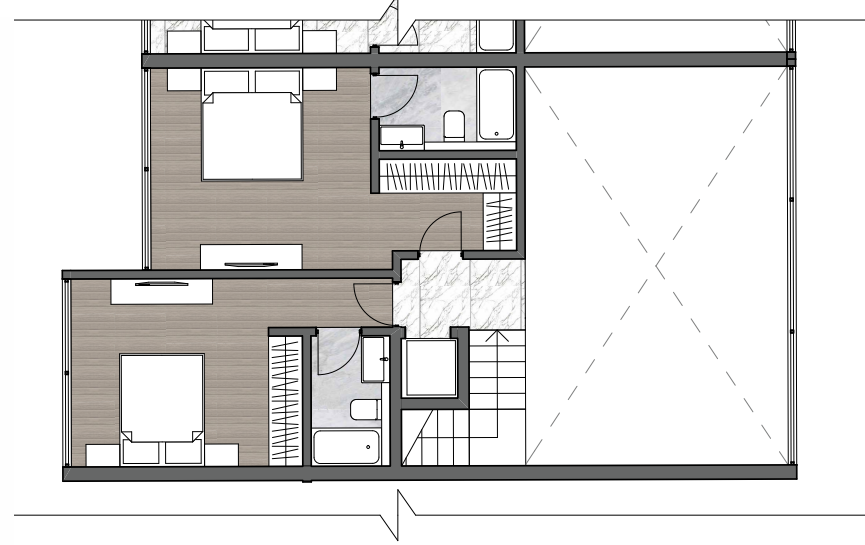
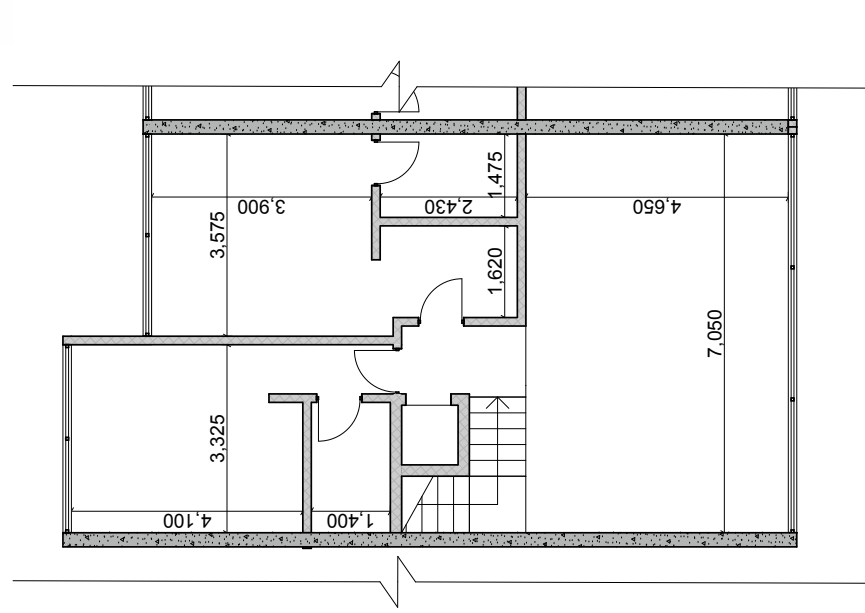
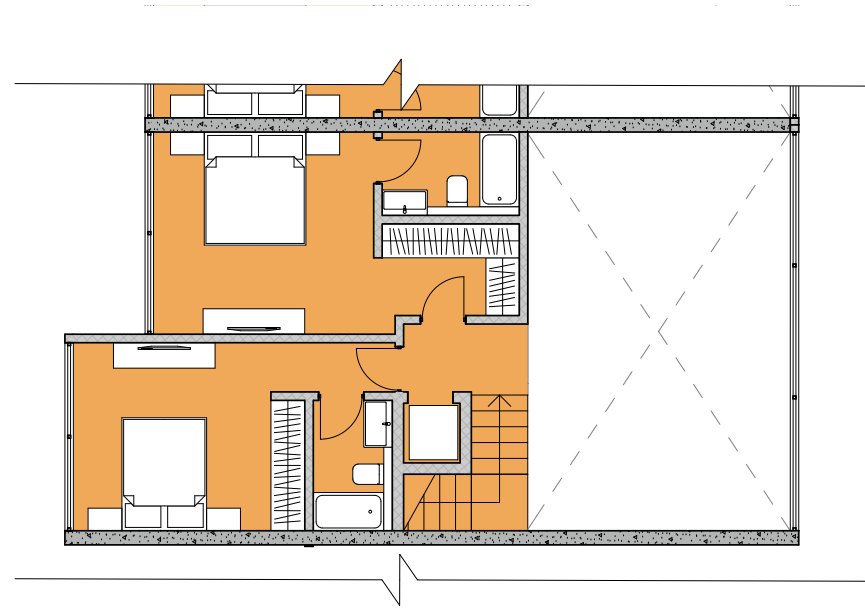




Apartment Typology
4 Bedroom Townhouse (First Floor)

007/008/009/010

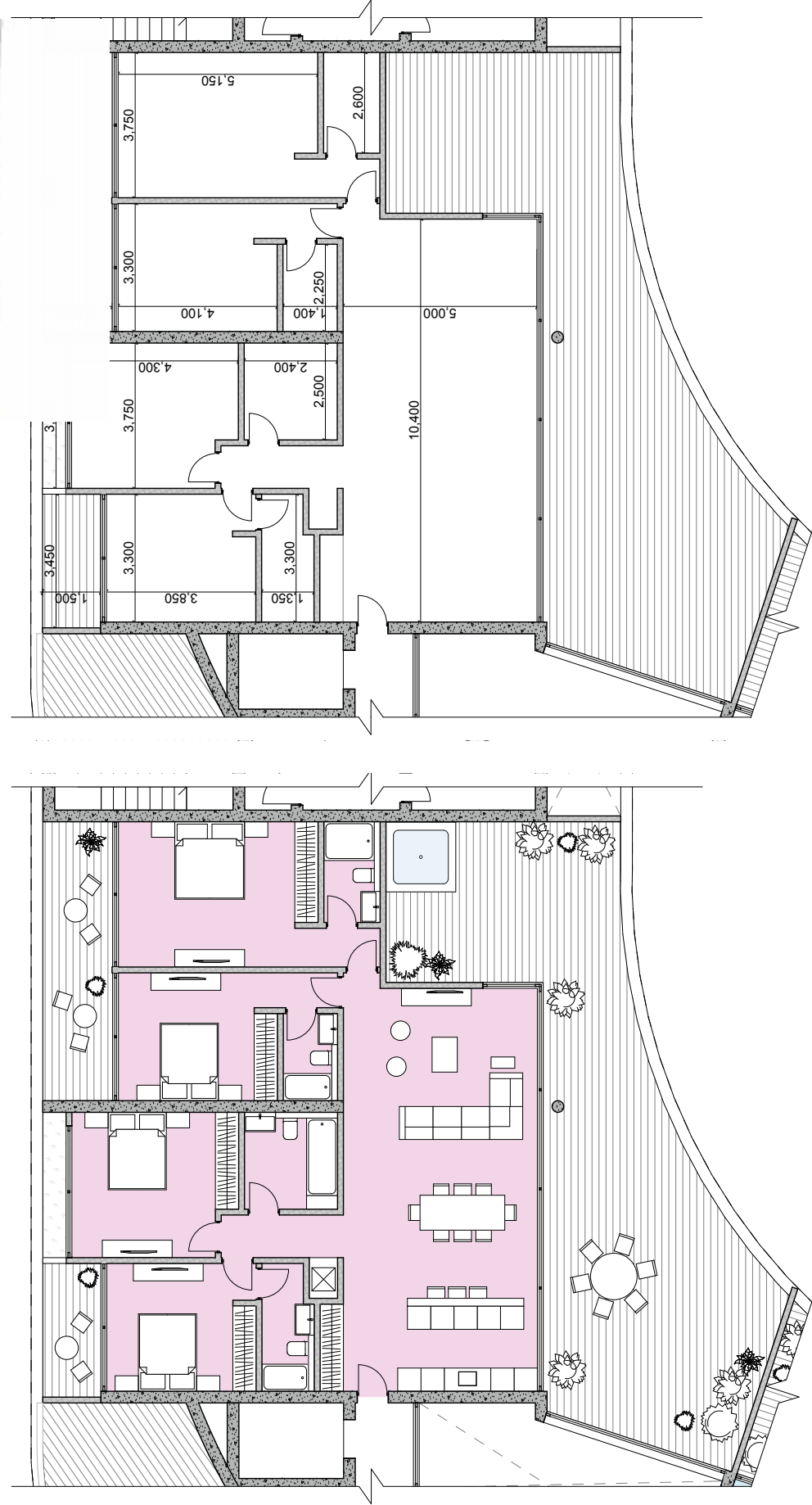
Area: 55,7m²



Apartment Typology
4 Bedroom Apartment - Type 01

506

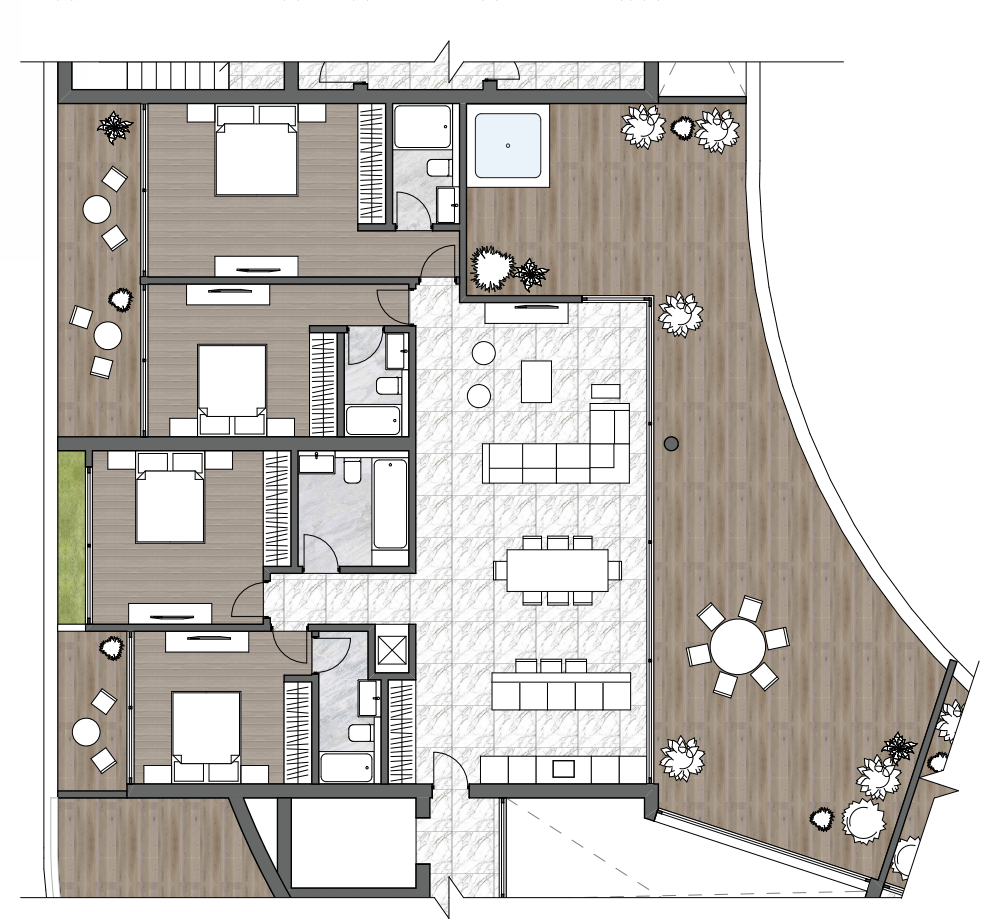
Area: 155m²



Apartment Typology
4 Bedroom Apartment - Type 01

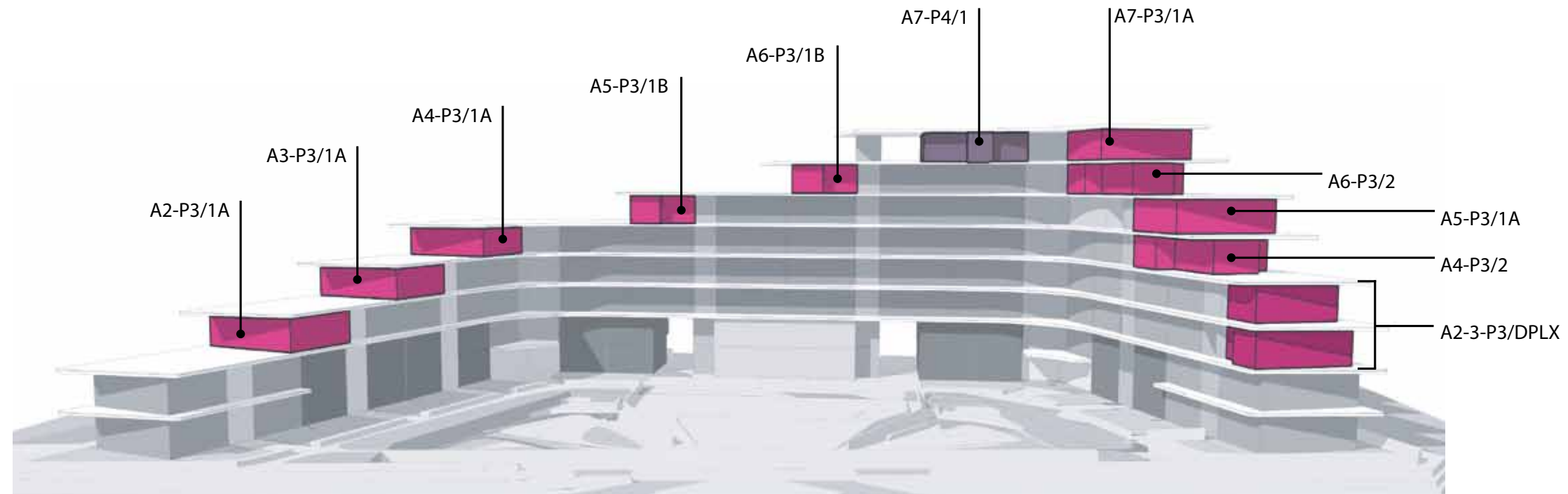
506

Area: 155m²



Penthouse Typology

Key Diagram - Plot A

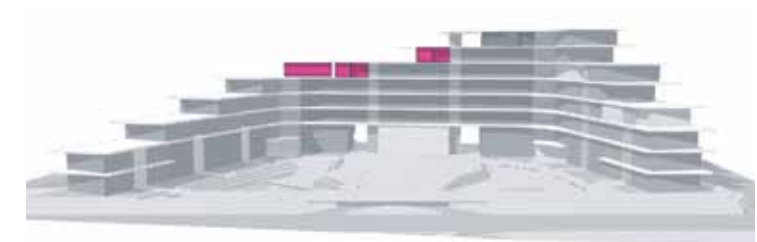


Apartment code: **A2 - P3/1A**

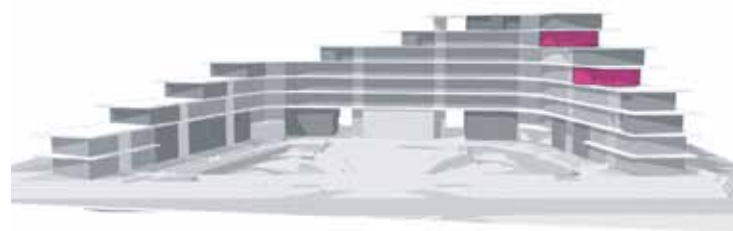
[A] - Plot code	[02] - Level No.	Name of the type
A - Big Plot		
B - Small plot		
		[P] - Penthouse
		[3] - No. of bedrooms



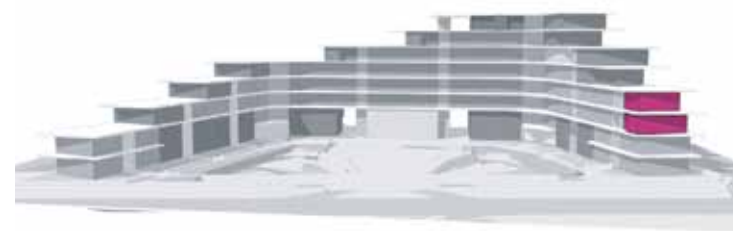
[3P/1A] 3 Bedroom Penthouse. Type 1A



[3P/1B] 3 Bedroom Penthouse. Type 1B



[3P/2] 3 Bedroom Penthouse. Type 2



[3P/DPLX] 3 Bedroom Penthouse. Type Duplex



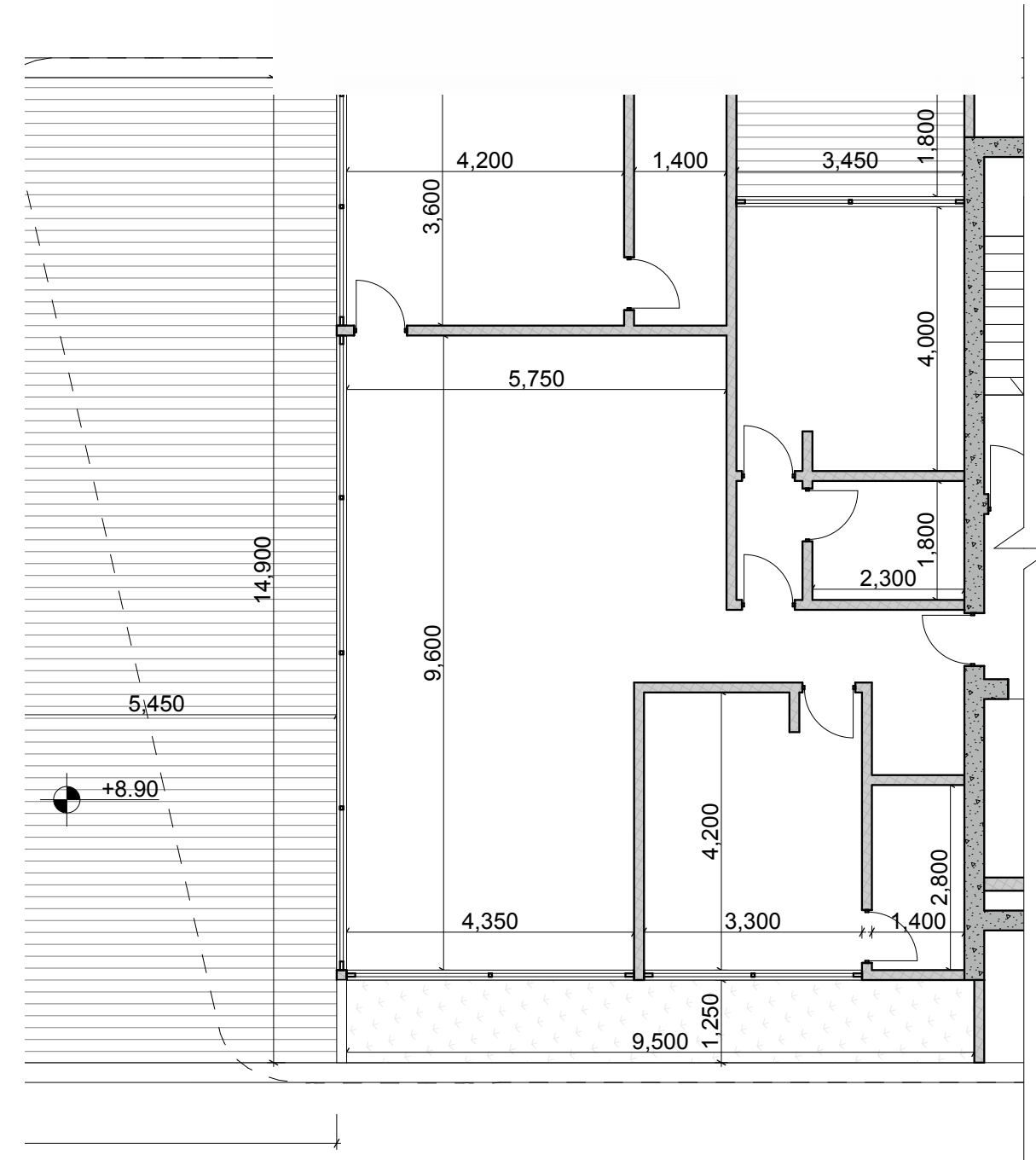
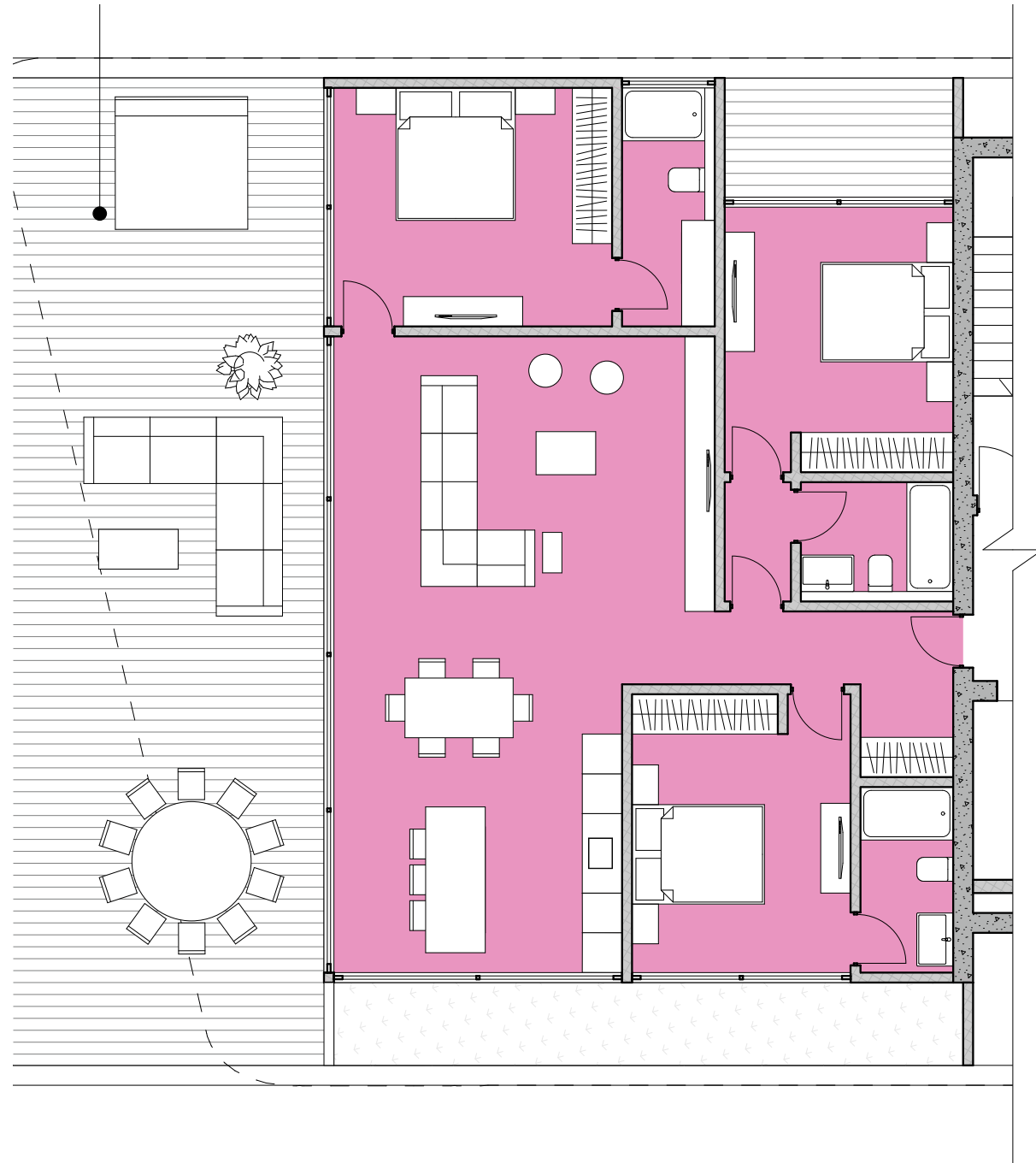
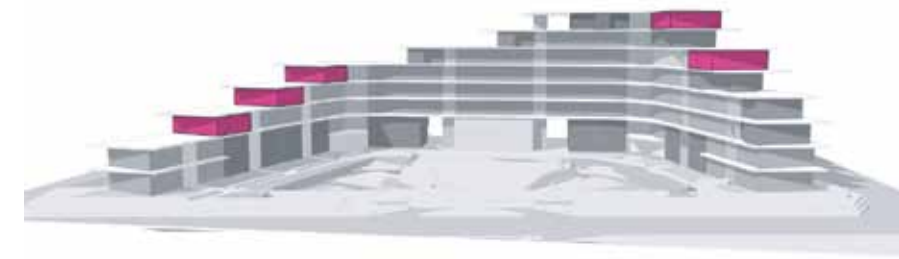
[4P/1] 4 Bedroom Penthouse. Type 1

Apartment Typology

3 Bedroom Penthouse - Type 01-A

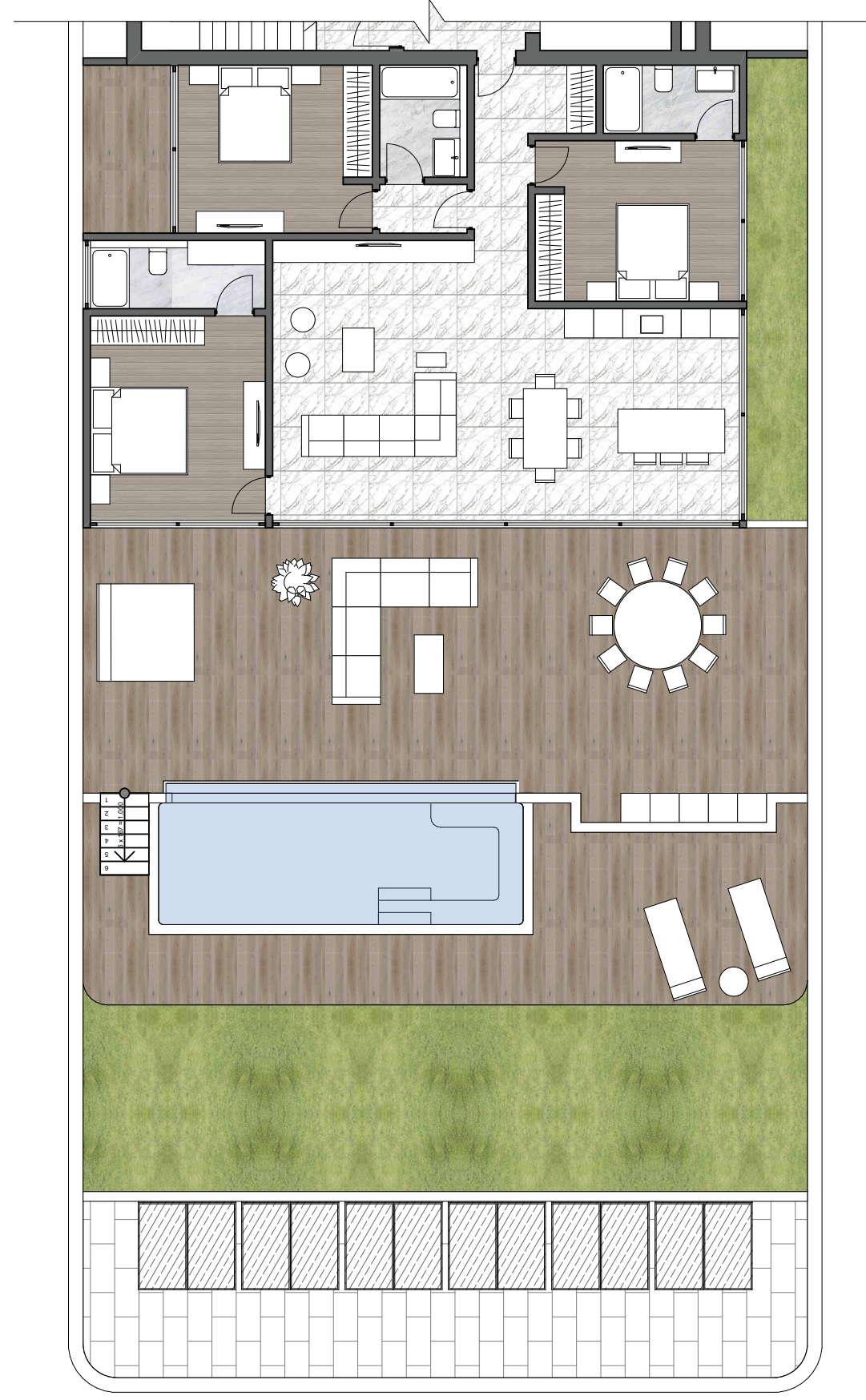
201/301/401/507/702

Area: 125.7m²



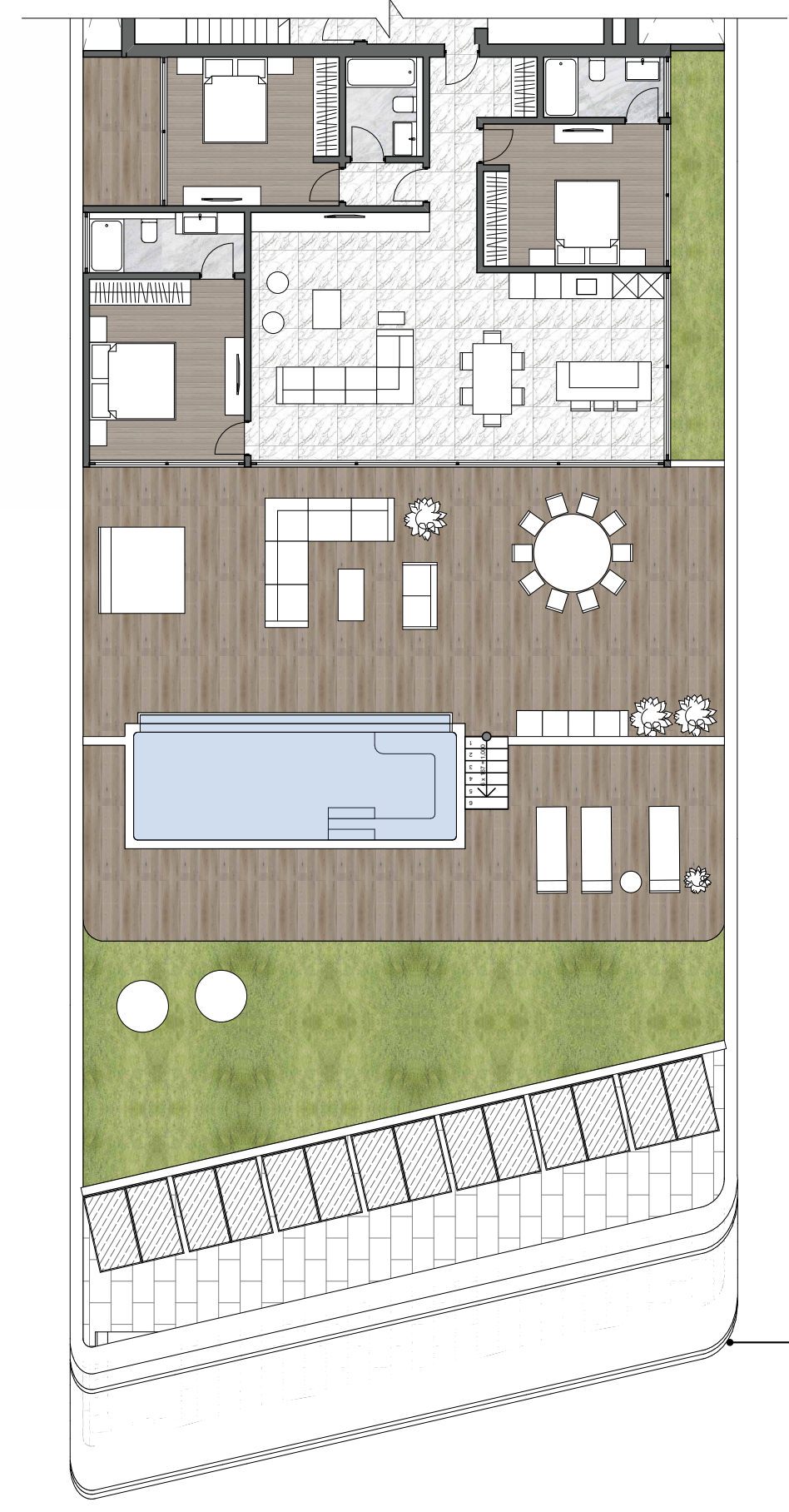
Penthouse Typology - Plot A
3 Bedroom Penthouse - A2-P3/1A

201



Penthouse Typology - Plot A
3 Bedroom Penthouse - A2-P3/1A

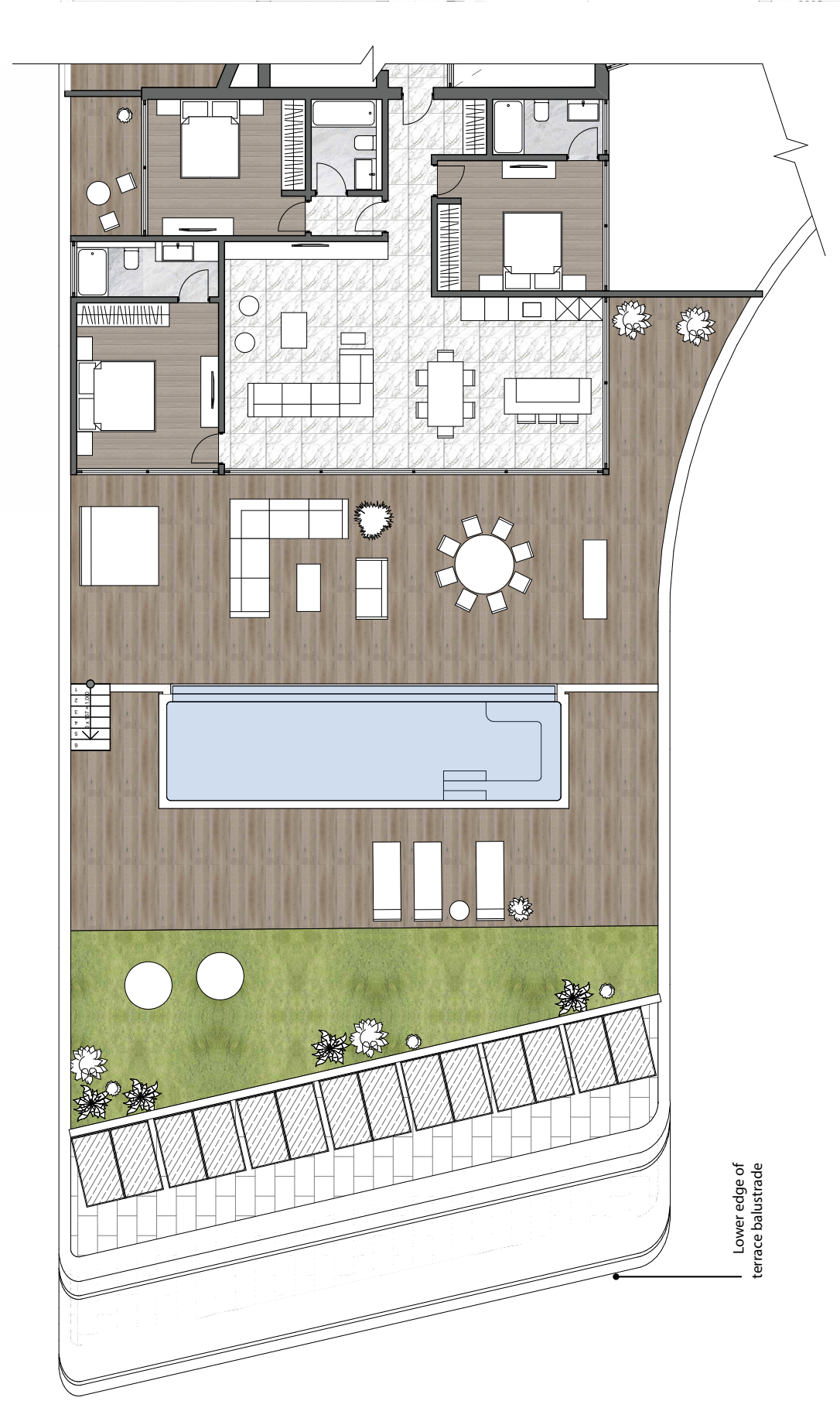
301



Lower edge of terrace balustrade

Penthouse Typology - Plot A
3 Bedroom Penthouse - A4-P3/1A

401



Lower edge of
terrace balustrade

Penthouse Typology - Plot A
3 Bedroom Penthouse - A7-P3/1A

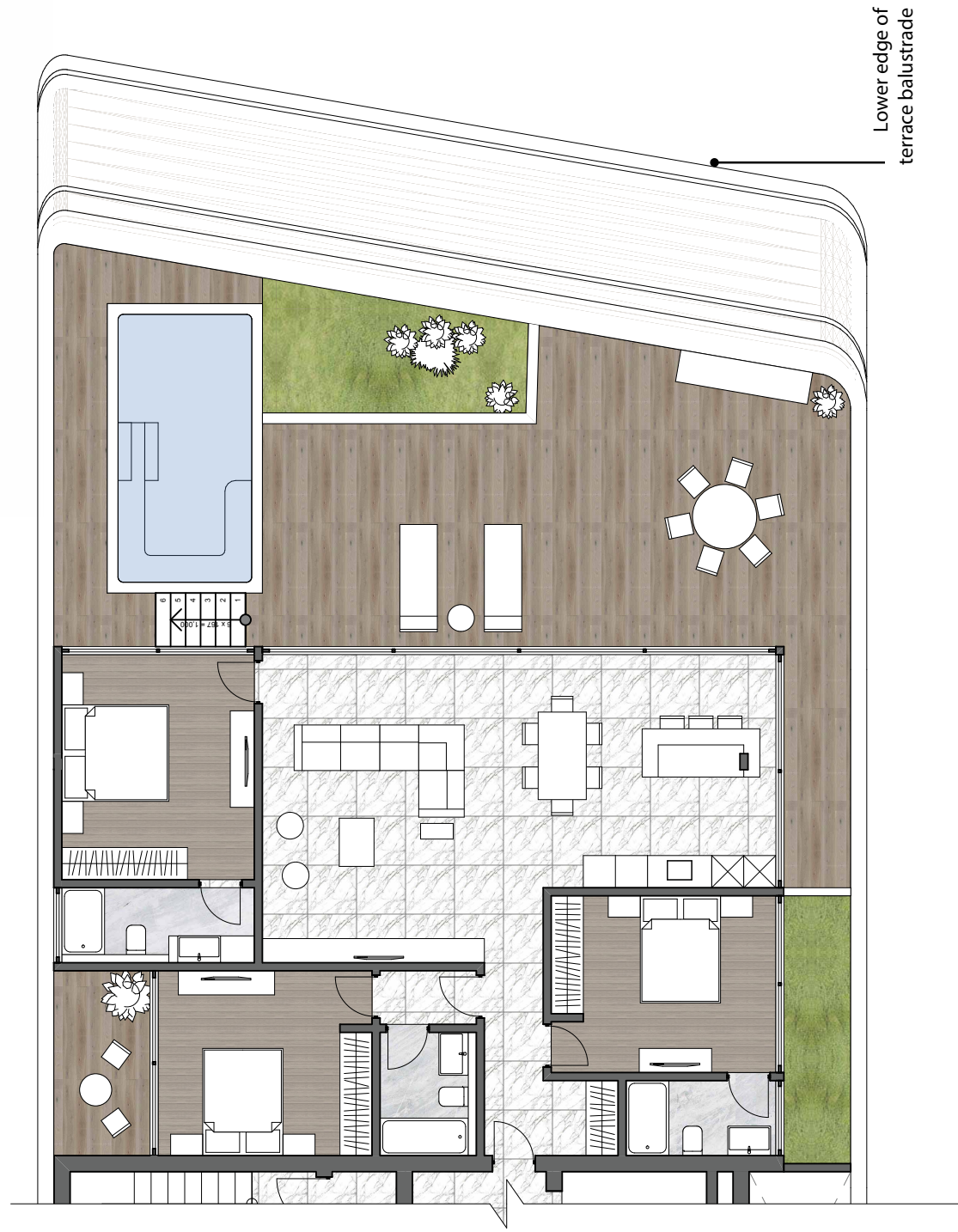
702



Lower edge of
terrace balustrade

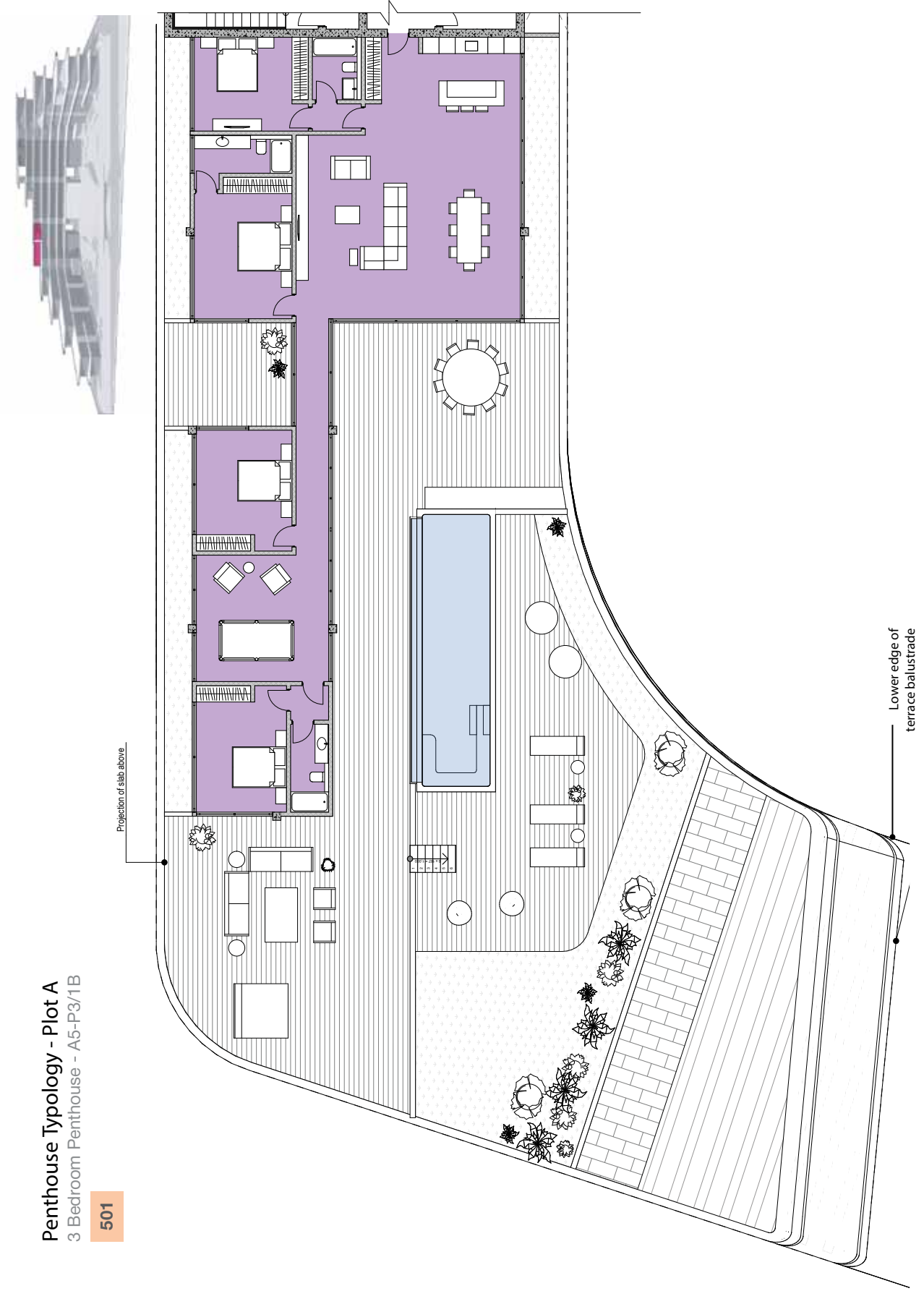
Penthouse Typology - Plot A
3 Bedroom Penthouse - A5-P3/1A

507



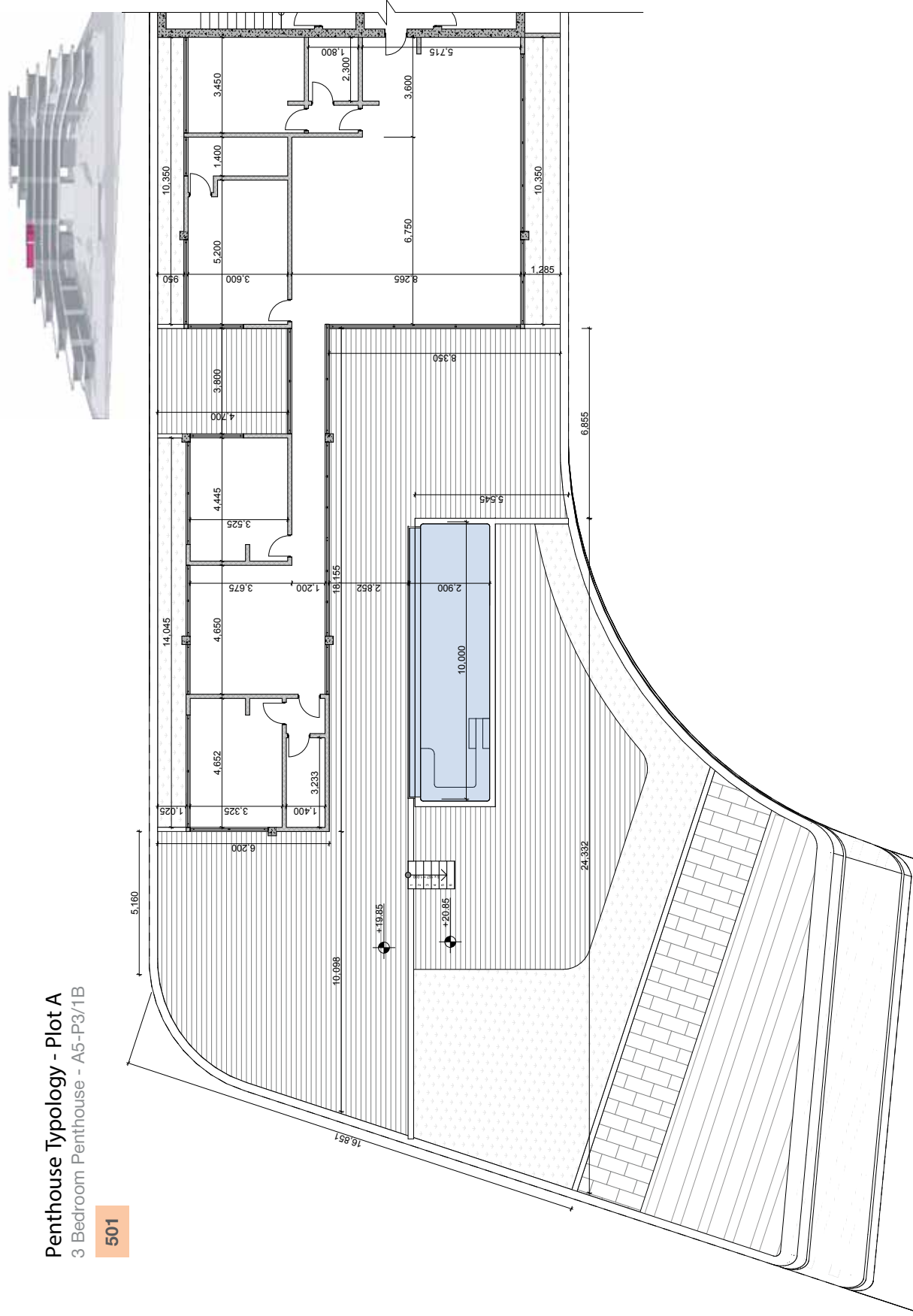
Penthouse Typology - Plot A
3 Bedroom Penthouse - A5-P3/1B

501



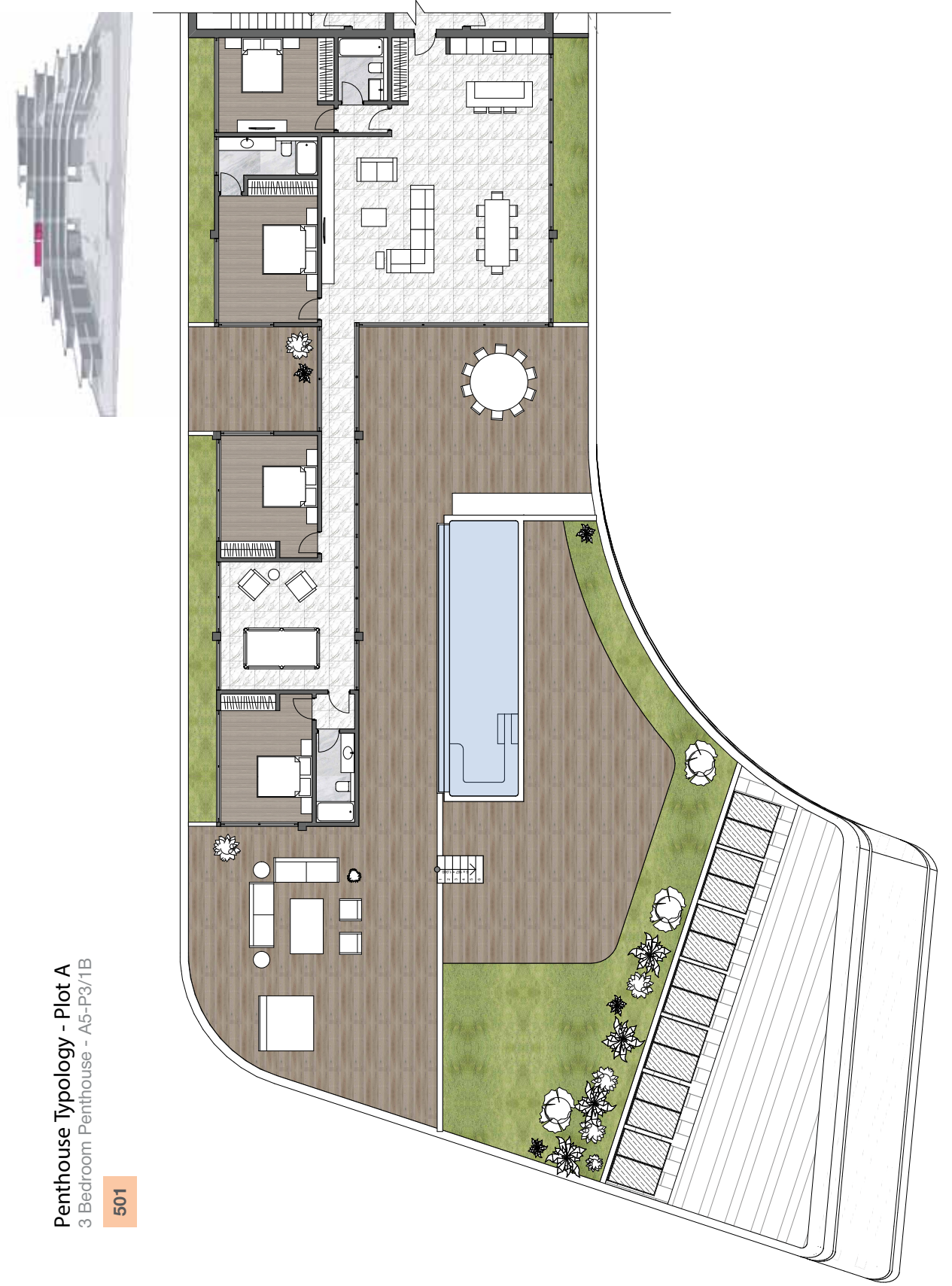
Penthouse Typology - Plot A
3 Bedroom Penthouse - A5-P3/1B

501



Penthouse Typology - Plot A
3 Bedroom Penthouse - A5-P3/1B

501

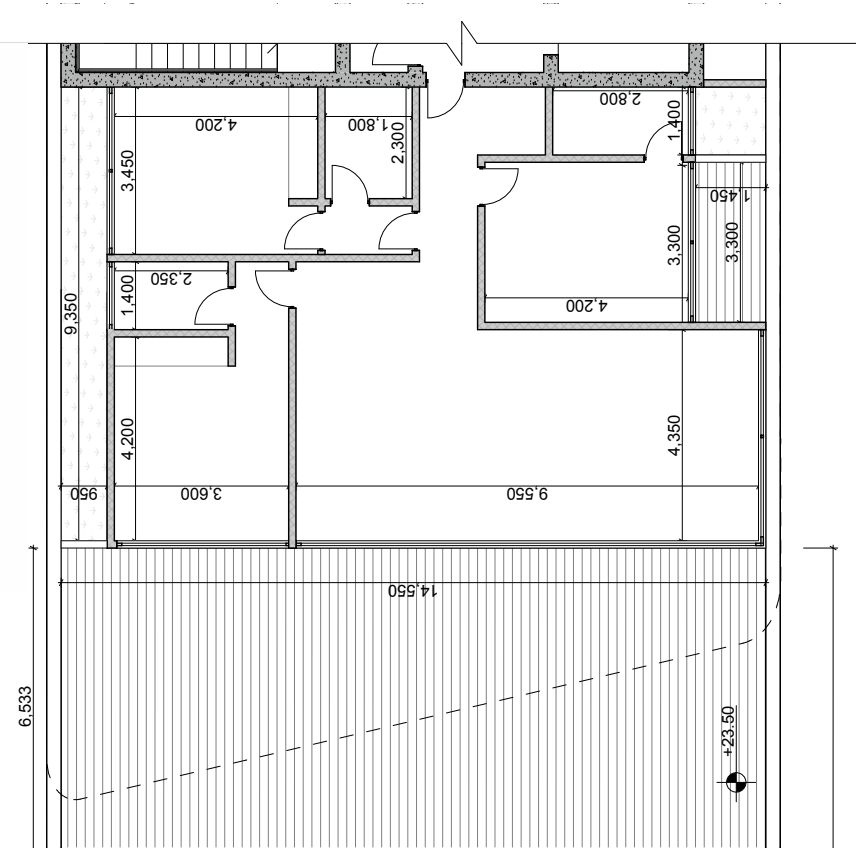
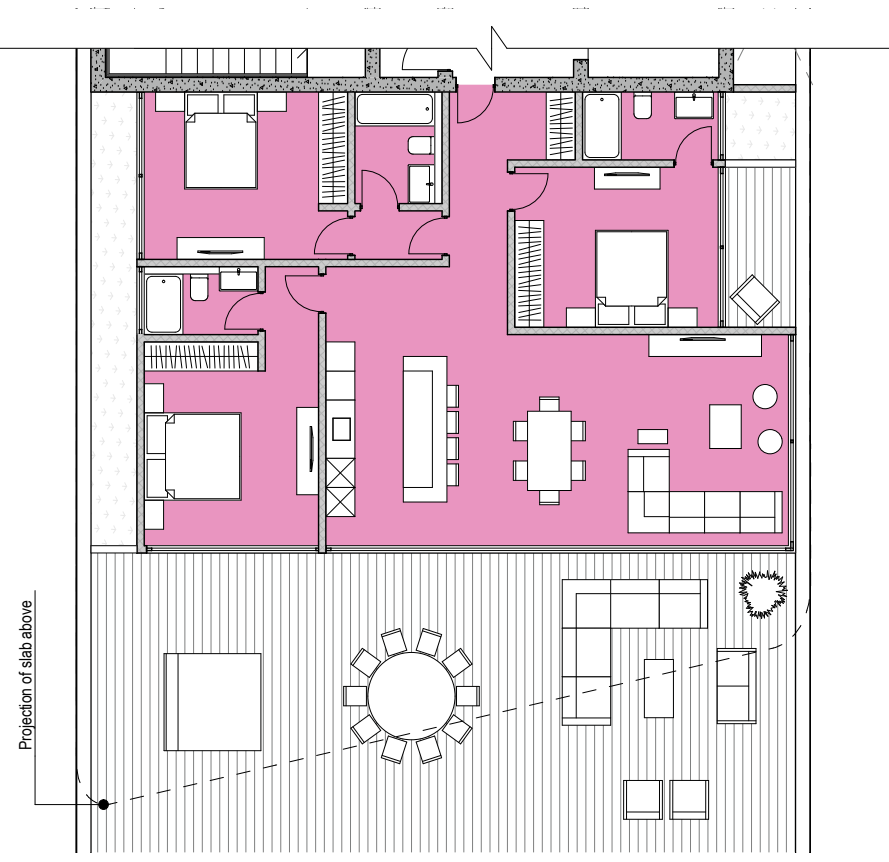




Apartment Typology
3 Bedroom Penthouse - Type 01-B

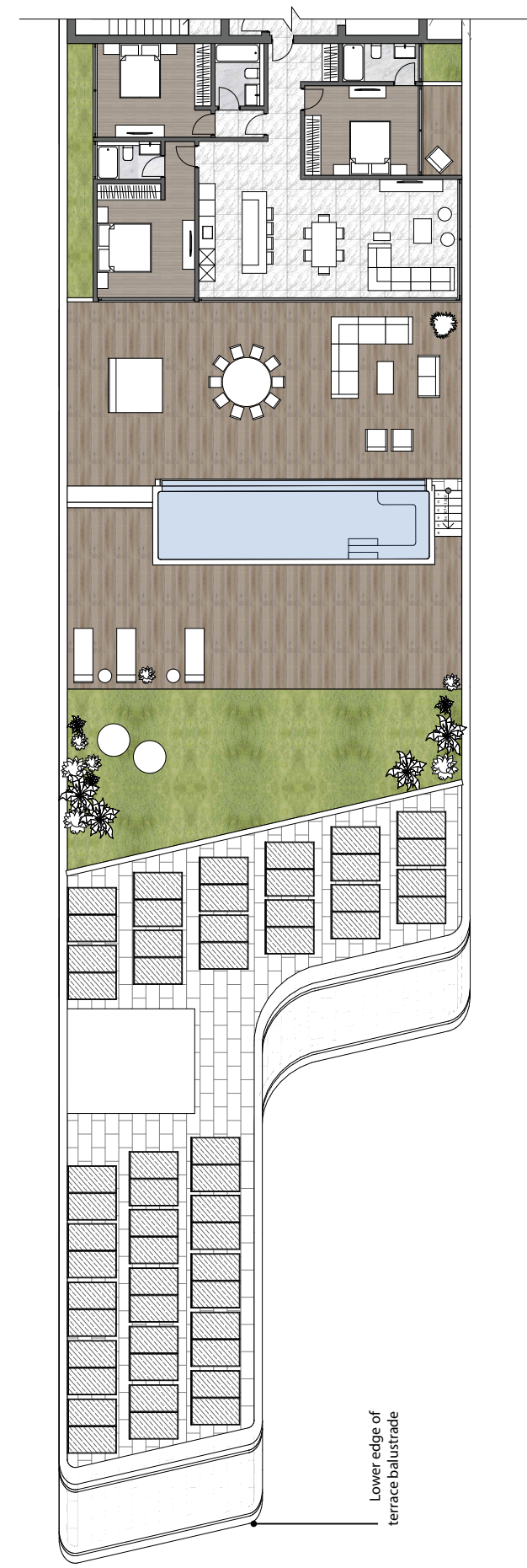
601

Area: 125m²



Penthouse Typology - Plot A
3 Bedroom Penthouse - A6-P3/1B

601

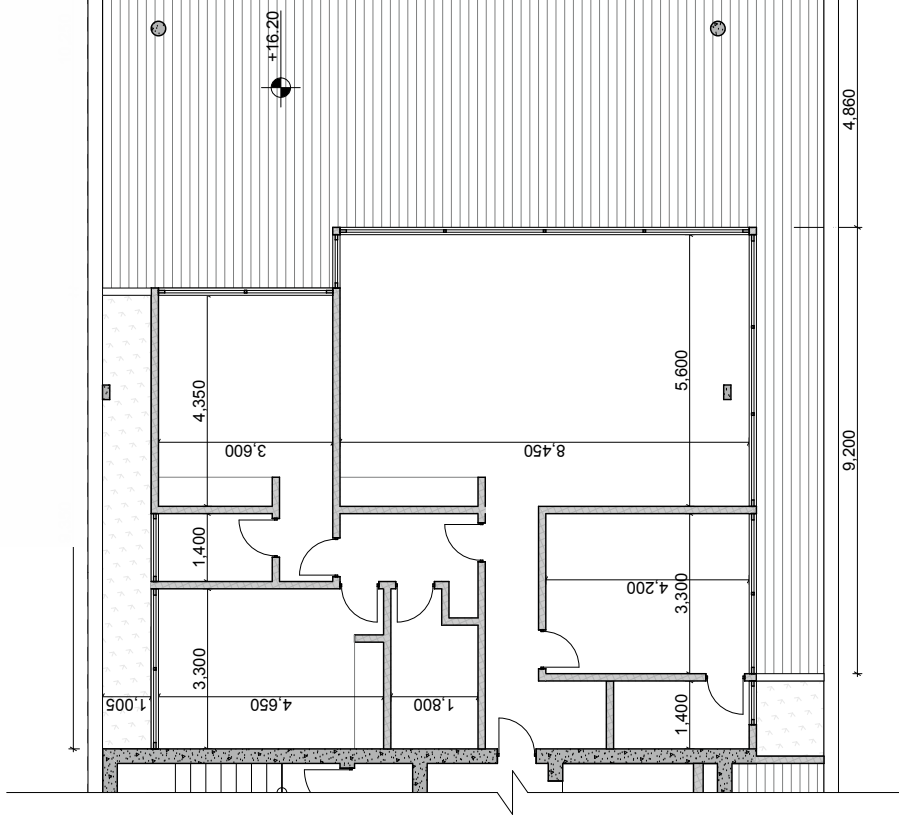
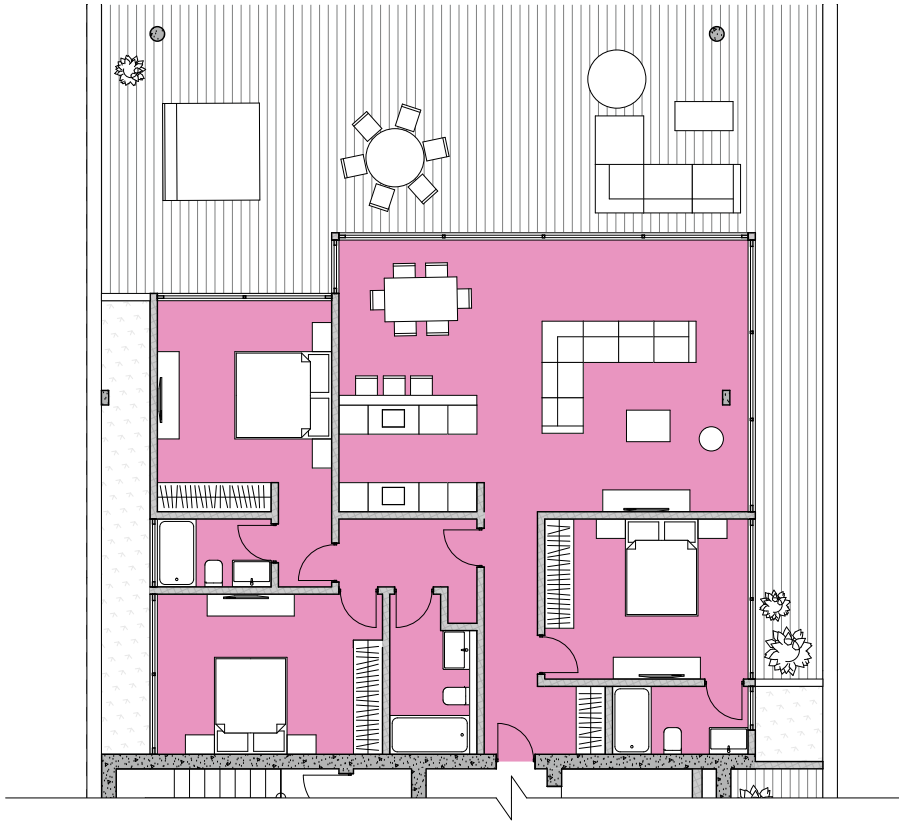


Lower edge of terrace balustrade

Apartment Typology
3 Bedroom Penthouse - Type 02

410/604

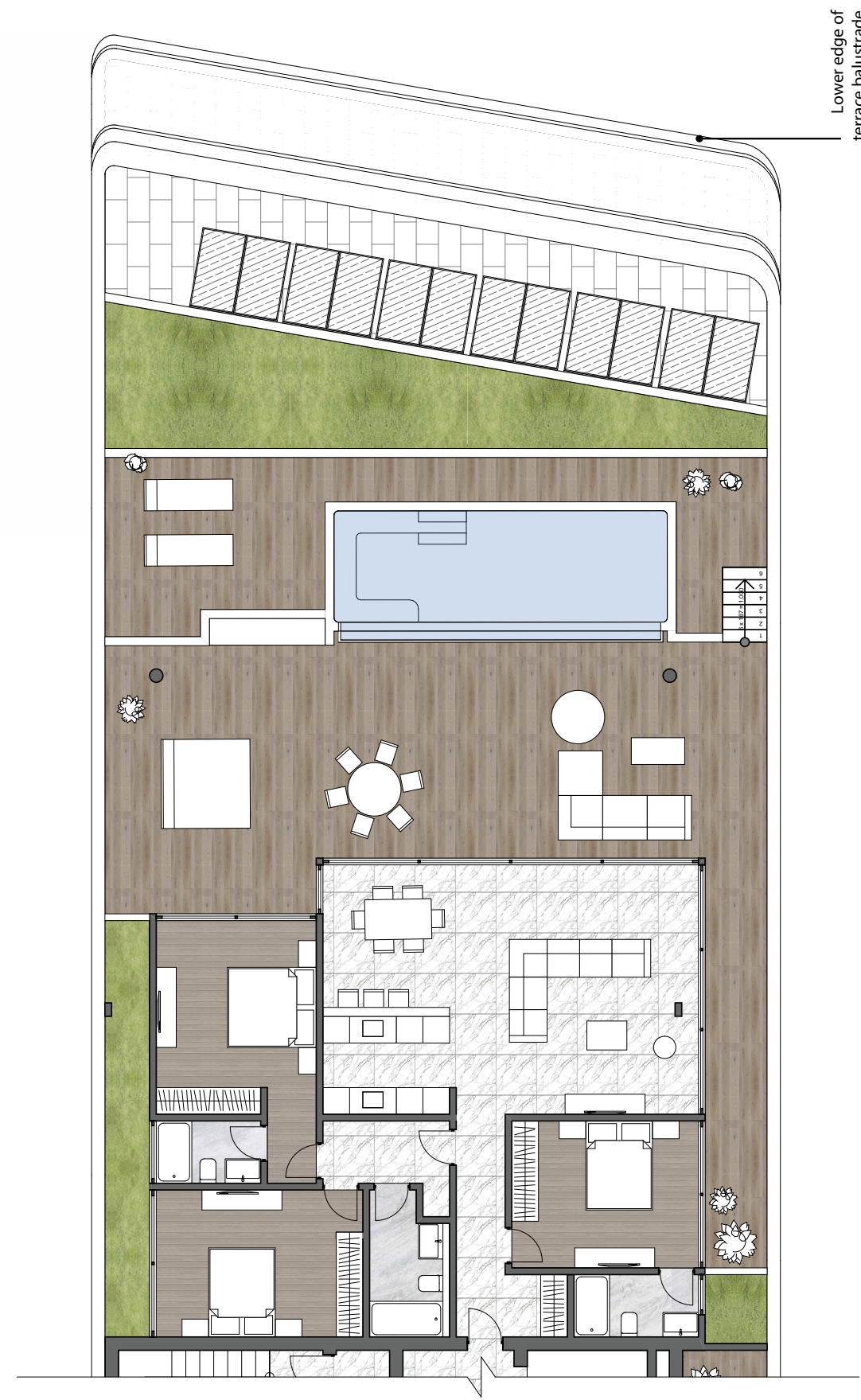
Area: 131m²



Penthouse Typology - Plot A

3 Bedroom Penthouse - A4-P3/2

410



Lower edge of
terrace balustrade

Penthouse Typology - Plot A
3 Bedroom Penthouse - A6-P3/2

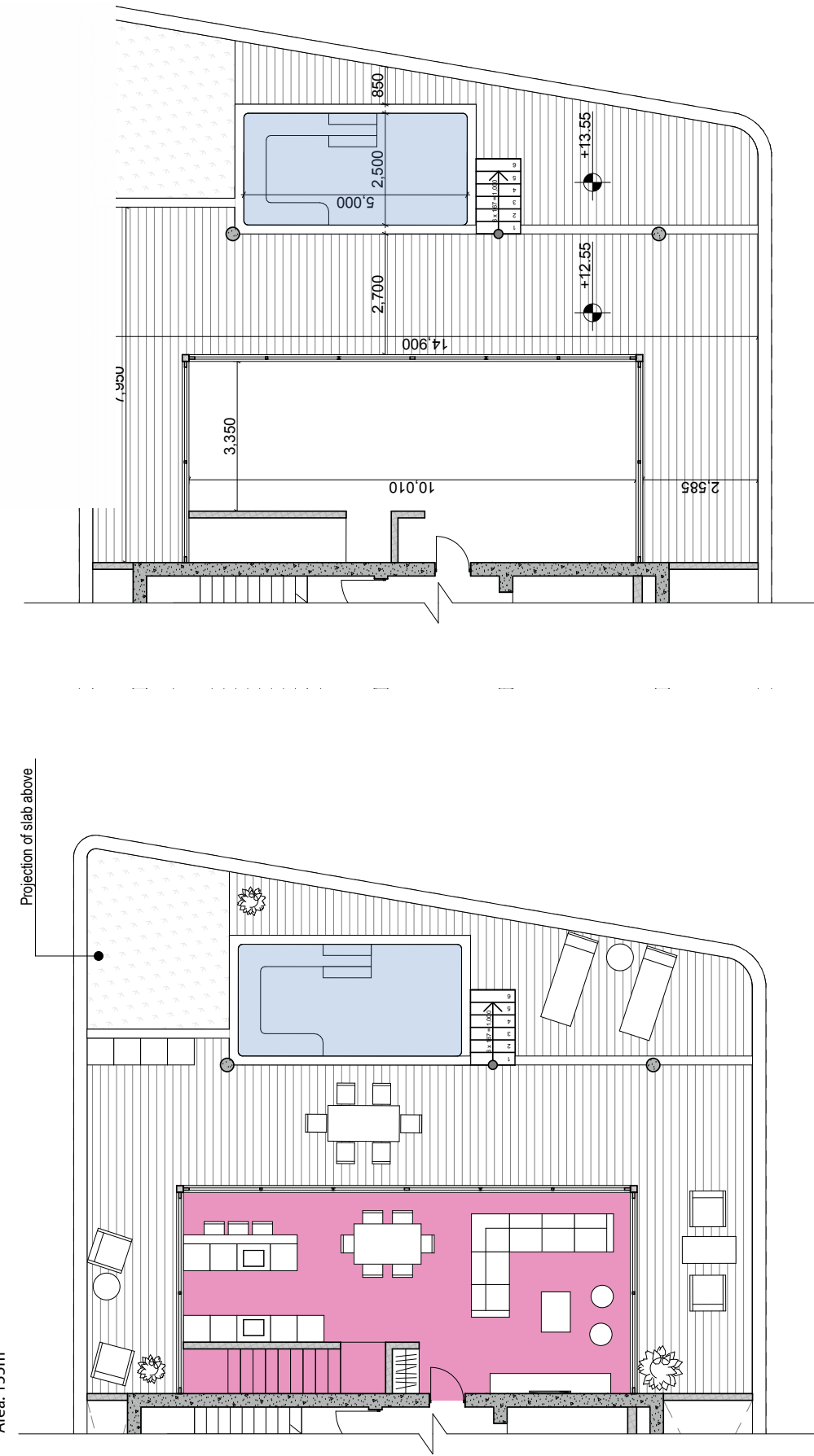
604



Apartment Typology
3 Bedroom Penthouse Duplex- Upper Floor

314

Area: 155m²



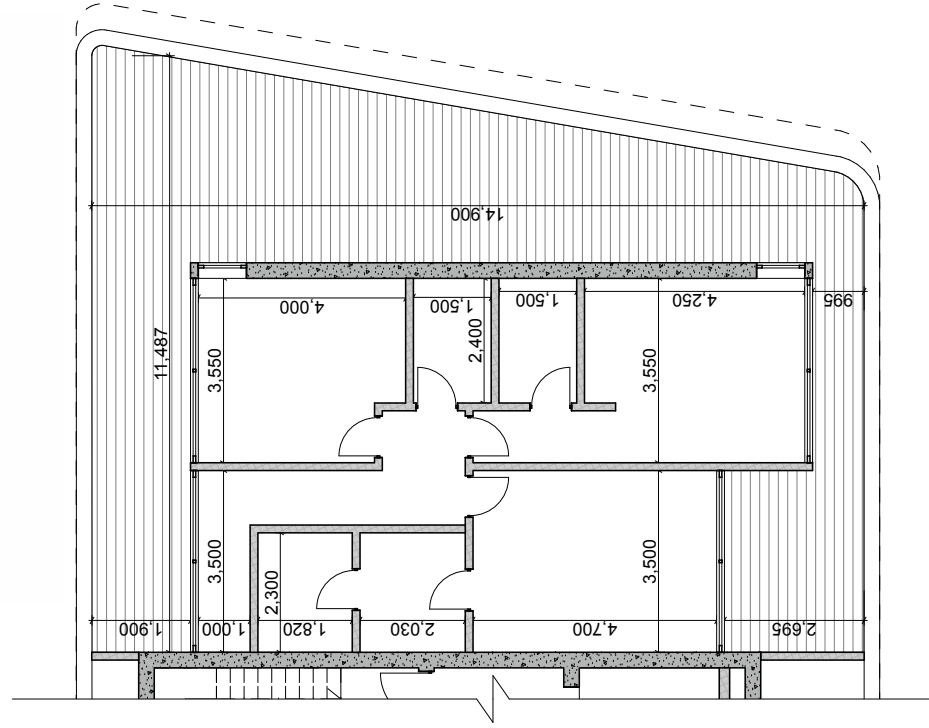
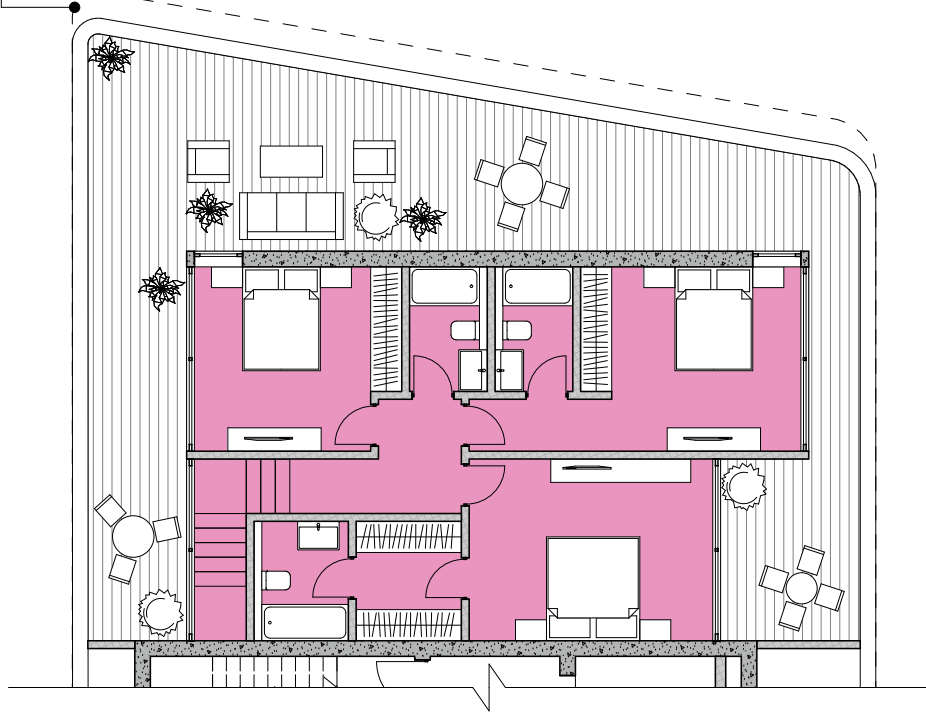


Apartment Typology
3 Bedroom Penthouse Duplex - Lower Level

314

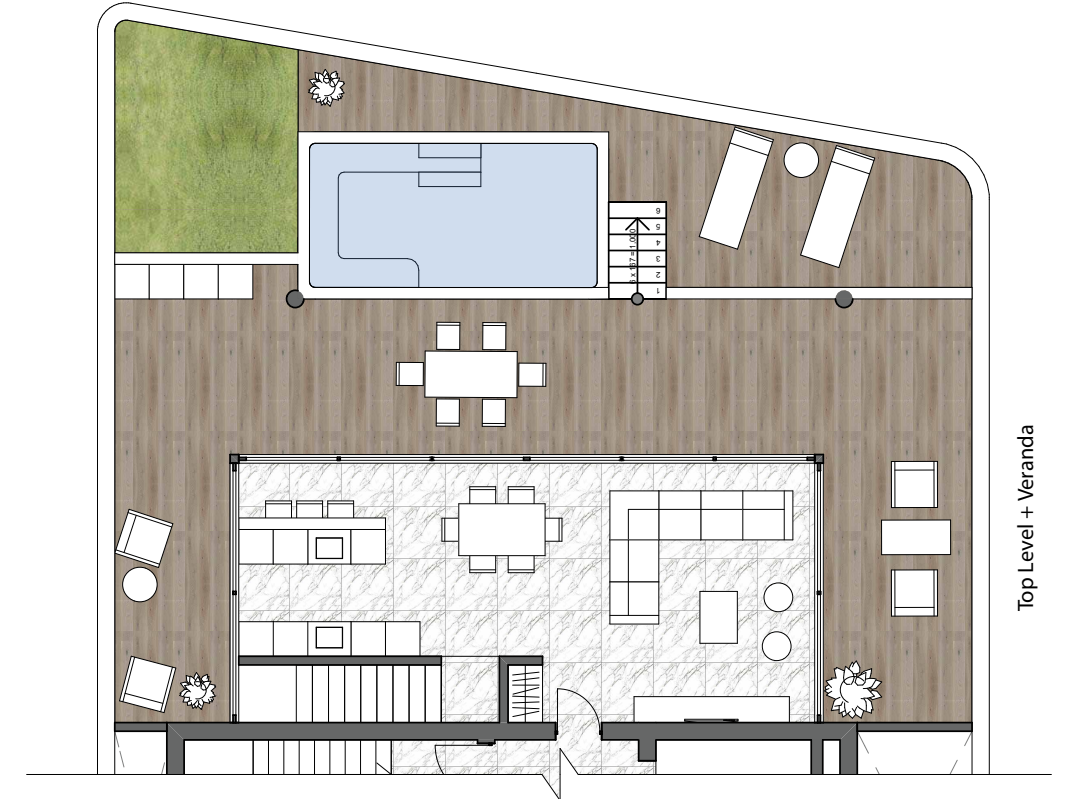
Area: 155m²

Projection of slab above

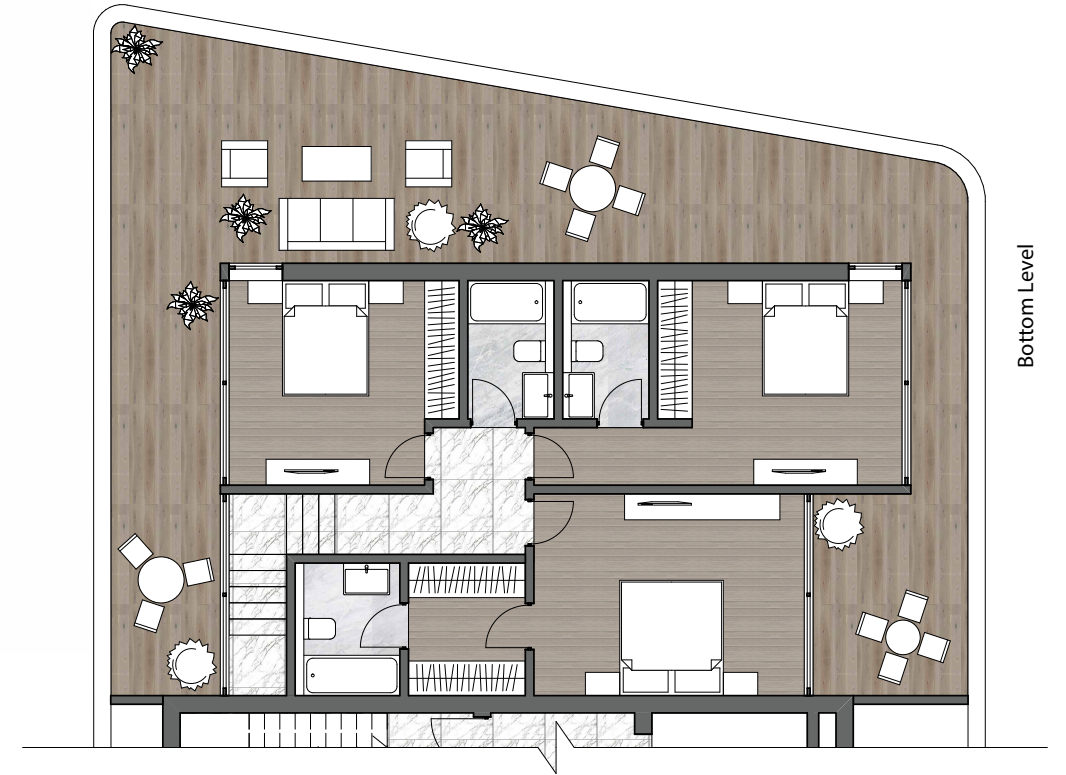


Penthouse Typology - Plot A
3 Bedroom Penthouse - A2-3-P3/DPLX

314



Top Level + Veranda

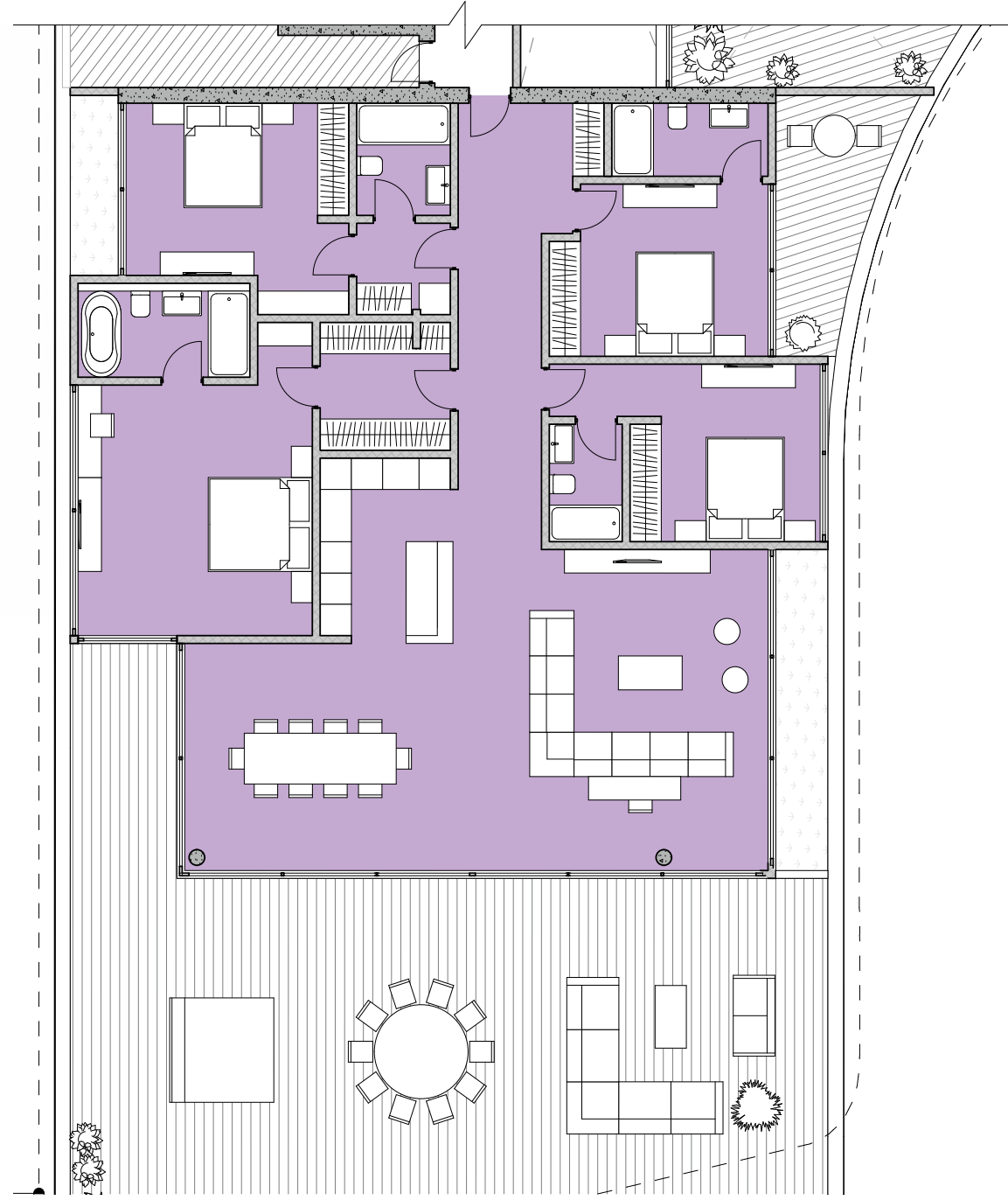


Bottom Level

Apartment Typology
4 Bedroom Penthouse

701

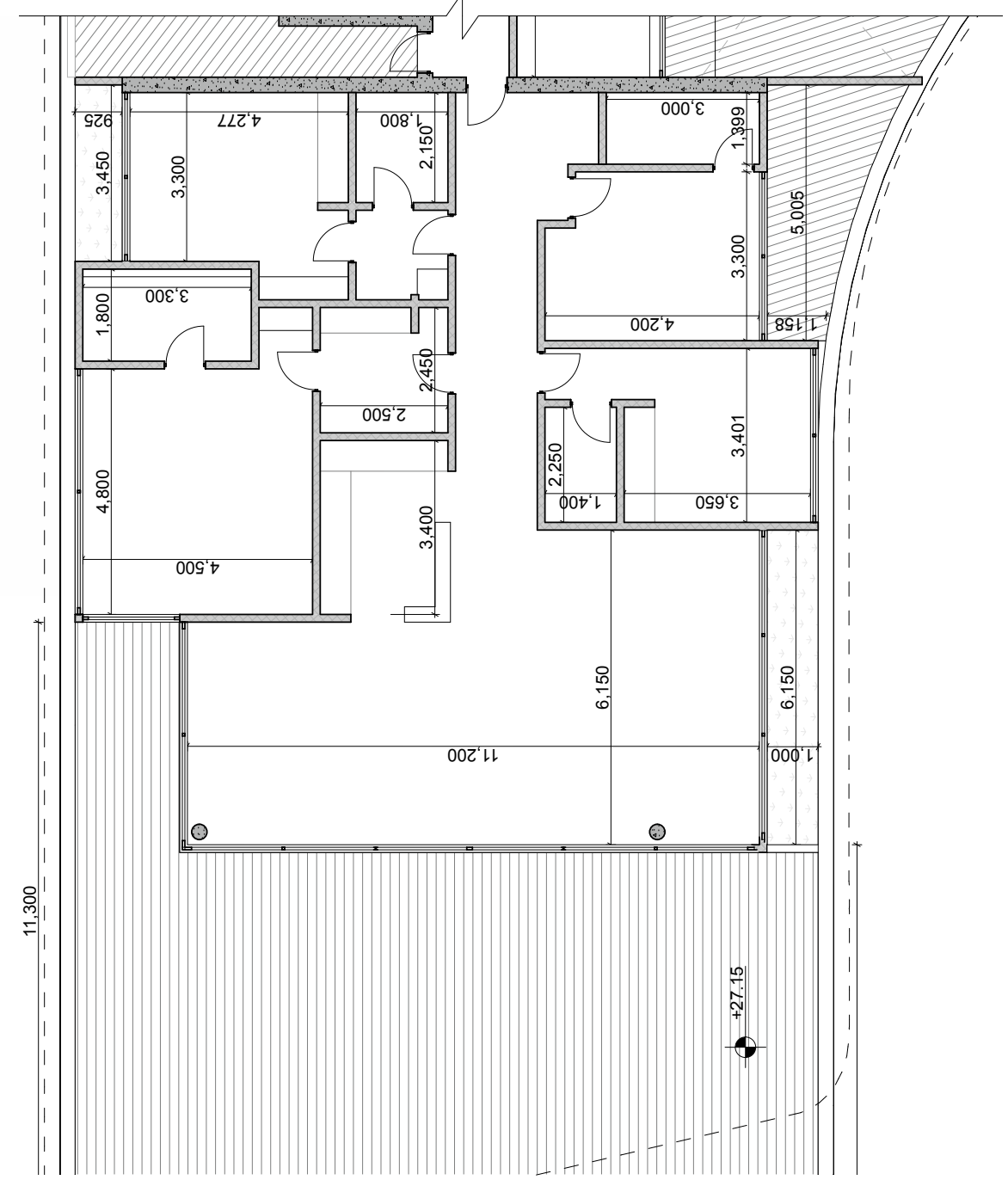
Area: 200m²



Apartment Typology
4 Bedroom Penthouse

701

Area: 200m²

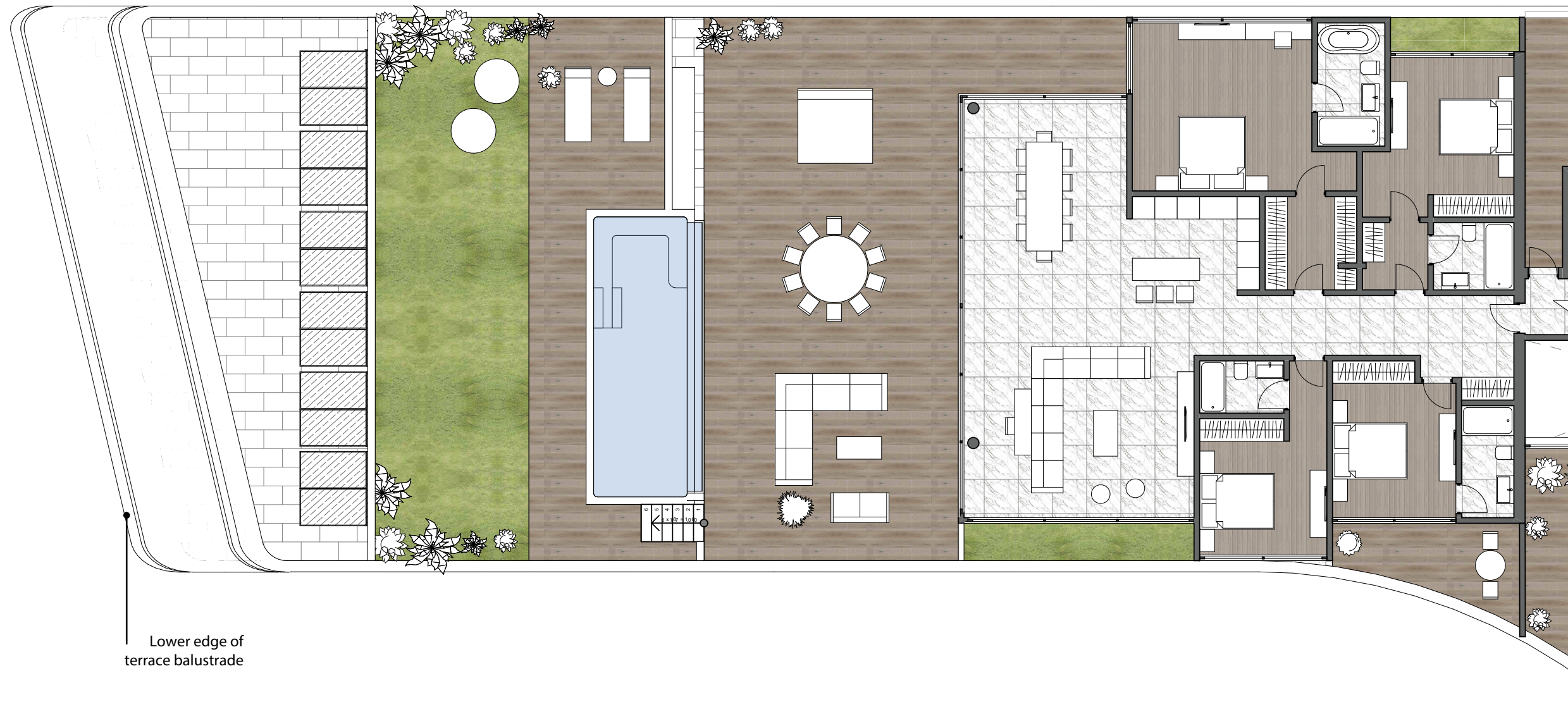
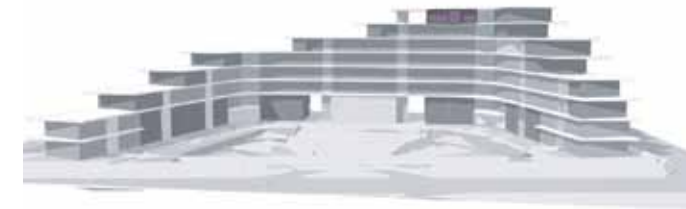


Penthouse Typology - Plot A

4 Bedroom Penthouse

701

Area: 200m²



Lower edge of
terrace balustrade

Choice of properties

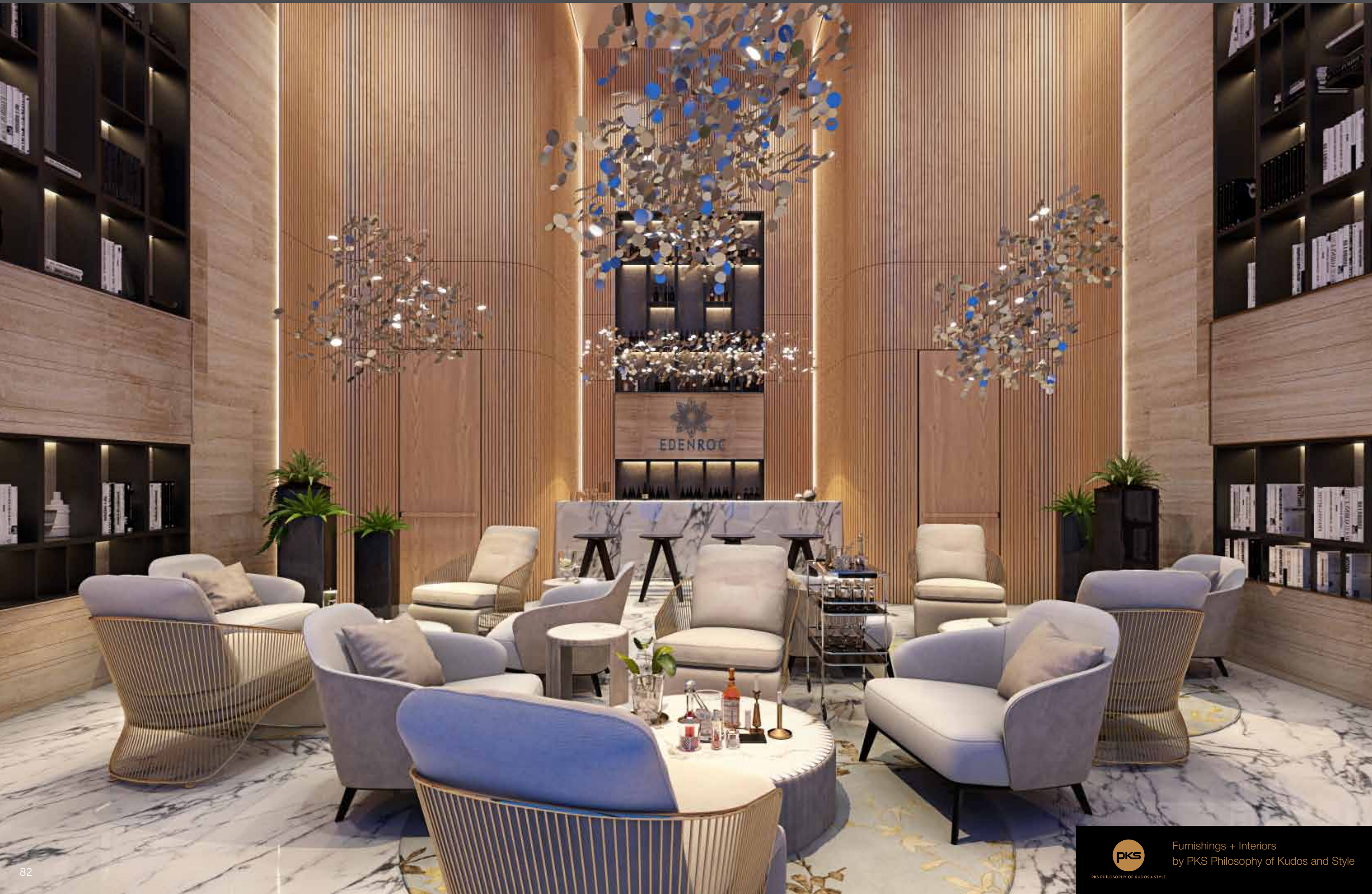
property	floor	zone id	bedrooms	type	indoor area, sq.m.	cov. veranda, sq.m.	uncov. veranda, sq.m.	garden/planter sq.m.	total area, sq.m.	private pool
001	Ground Floor	001 (3BD)			78.69					
	Level 01	101 (3BD)			62.71					
001	0		3 bed	Duplex	141.4	96.91		132.45	238.31	
002	Ground Floor	002 (3BD)			77.25					
	Level 01	102 (3BD)			63.56					
002	0		3 bed	Duplex	140.81	54.95		87.02	195.76	
003	Ground Floor	003 (3BD)			77.25					
	Level 01	103 (3BD)			54.13					
003	0		3 bed	Duplex	131.38	12.66		113.3	144.04	
004	Ground Floor	004 (3BD)			77.25					
	Level 01	104 (3BD)			54.13					
004	0		3 bed	Duplex	131.38	12.45		122.87	143.83	
005	Ground Floor	005 (3BD)			77.25					
	Level 01	105 (3BD)			54.13					
005	0		3 bed	Duplex	131.38	12.45		128.87	143.83	
006	Ground Floor	006 (3BD)			77.25					
	Level 01	106 (3BD)			54.13					
006	0		3 bed	Duplex	131.38			124.25	131.38	
007	Basement	B01 (4BT)			100.42					
	Ground Floor	007 (4BT)			80.58					
	Level 01	107 (4BT)			55.45					
007	0		4 bed	Duplex	236.45	7.33	6.65	106.04	250.43	
008	Basement	B02 (4BT)			100.42					
	Ground Floor	008 (4BT)			81.71					
	Level 01	108 (4BT)			55.64					
008	0		4 bed	Triplex	237.77	7.33	6.64	110.11	251.74	
009	Basement	B03(4BT)			100.42					
	Ground Floor	009 (4BT)			81.71					
	Level 01	109 (4BT)			55.64					
009	0		4 bed	Triplex	237.77	7.03	6.9	106.14	251.74	

property	floor	zone id	bedrooms	type	indoor area, sq.m.	cov. veranda, sq.m.	uncov. veranda, sq.m.	garden/planter sq.m.	total area, sq.m.	private pool
010	Basement	B04 (4BT)			100.42					
	Ground Floor	010 (4BT)			80.58					
	Level 01	110 (4BT)			55.45					
010	0		4 bed	Triplex	236.45	7.03	6.9	99.31	250.38	
011	Ground Floor	011 (3BD)			77.25					
	Level 01	111 (3BD)			54.25					
011	0		3 bed	Duplex	131.5	12.24		99.02	143.74	
012	Ground Floor	012 (3BD)			77.25					
	Level 01	112 (3BD)			54.14					
012	0		3 bed	Duplex	131.39	12.54		104.43	143.93	
013	0	013 (2BT1)	2 bed	Type 01	90.32	21.45		79.23	111.77	
014	0	014 (2BT2)	2 bed	Type 02	92.82	57.26		159.14	150.08	
113	1	113 (2BT1)	2 bed	Type 01	90.11	21.13	7.41		118.7	
114	1	114 (2BT2)	2 bed	Type 02	92.84	53.77			146.61	
201	2	201 (PHT1A)	3 bed	Penthouse - Type 1A	125.33	38.15	114.07	71.96	349.5	Yes
202	2	202 (2BT1)	2 bed	Type 01	90.14	21.35			111.49	
203	2	203 (2BT1)	2 bed	Type 01	90.14	21.35			111.49	
204	2	204 (2BT1)	2 bed	Type 01	90.13	23.36	8.41		121.9	
205	2	205 (2BT1)	2 bed	Type 01	90.42	22.39		5.49	118.3	
206	2	206 (3BT1B)	3 bed	Type 01B	119.59	37.03		6.81	163.4	
207	2	207 (3BT1B)	3 bed	Type 01B	119.59	32.4	5.01	6.67	163.7	
208	2	208 (3BT1A)	3 bed	Type 01A	120.49	28.48		6.1	155.1	
209	2	209 (3BT1A)	3 bed	Type 01A	120.49	28.48		6.1	155.1	
210	2	210 (3BT1B)	3 bed	Type 01B	119.59	32.39	5.01	6.67	163.7	

Choice of properties

property	floor	zone id	bedrooms	type	indoor area, sq.m.	cov. veranda, sq.m.	uncov. veranda, sq.m.	garden/planter sq.m.	total area, sq.m.	private pool
211	2	211 (3BT1B)	3 bed	Type 01B	119.59	37.03		6.73	163.4	
212	2	212 (2BT1)	2 bed	Type 01	90.42	22.28		5.49	118.2	
213	2	213 (2BT1)	2 bed	Type 01	89.98	23.29			113.27	
214	2	214 (2BT1)	2 bed	Type 01	90	21.65	8.39		120	
215	2	215 (2BT1)	2 bed	Type 01	90	21.35			111.35	
301	3	301 (PHT1A)	3 bed	Penthouse - Type 1A	125.34	28.46	141.52	74.65	370	Yes
302	3	302 (2BT1)	2 bed	Type 01	90.27	23.36			113.63	
303	3	303 (2BT1)	2 bed	Type 01	90.42	13.49	30.78	6.43	141.1	
304	3	304 (3BT1B)	3 bed	Type 01B	119.59	37.03		6.81	163.4	
305	3	305 (3BT1B)	3 bed	Type 01B	119.59	32.4		6.67	158.7	
306	3	306 (3BT1A)	3 bed	Type 01A	120.49	28.48		6.1	155.1	
307	3	307 (3BT1A)	3 bed	Type 01A	120.49	28.48		6.1	155.1	
308	3	308 (3BT1B)	3 bed	Type 01B	119.59	32.39		6.67	158.7	
309	3	309 (3BT1B)	3 bed	Type 01B	119.59	37.03		6.73	163.4	
310	3	310 (2BT1)	2 bed	Type 01	90.55	22.38	18.94	6.48	138.4	
311	3	311 (2BT1)	2 bed	Type 01	89.98	23.29			113.27	
312	3	312 (2BT1)	2 bed	Type 01	90	21.35			111.35	
313	3	313 (2BT1)	2 bed	Type 01	90.12	21.32			111.44	
	Level 02	216 (PHDU)			85.6					
	Level 03	314 (PHDU)			49.49					
314	3		3 bed	Penthouse	135.09	150.85	27.96	12.72	326.6	Yes
401	4	401 (PHT1)	3 bed	Penthouse - Type 1A	125.72	24.68	164.73	50.33	365.5	Yes

property	floor	zone id	bedrooms	type	indoor area, sq.m.	cov. veranda, sq.m.	uncov. veranda, sq.m.	garden/planter sq.m.	total area, sq.m.	private pool
402	4	402 (3BT1B)	3 bed	Type 01B	119.59	37.03		6.81	163.4	
403	4	403 (3BT1B)	3 bed	Type 01B	119.59	32.4	5.01	6.67	163.7	
404	4	404 (3BT1B)	3 bed	Type 01A	120.49	28.48		6.1	155.1	
405	4	405 (3BT1A)	3 bed	Type 01A	120.49	28.48		6.1	155.1	
406	4	406 (3BT1B)	3 bed	Type 01B	119.59	32.39	5.01	6.67	163.7	
407	4	407 (3BT1B)	3 bed	Type 01B	119.59	37.03		6.73	163.4	
408	4	408 (3BT1)	2 bed	Type 01	90.55	22.35		6.61	119.5	
409	4	409 (3BT1)	2 bed	Type 01	90.12	23.39	7.79		121.3	
410	4	410 (PHT2)	3 bed	Penthouse - Type 2	131.56	136.85	19	44.64	332.1	Yes
501	5	501 (PHT1B)	4 bed	Penthouse - Type 1B	210.91	27.29	275.8	117.03	631	Yes
502	5	502 (3BT1A)	3 bed	Type 01A	120.49	28.48		6.1	155.1	
503	5	503 (3BT1A)	3 bed	Type 01A	120.49	28.48		6.1	155.1	
504	5	504 (3BT1B)	3 bed	Type 01B	119.59	32.39		6.67	158.7	
505	5	505 (3BT1B)	3 bed	Type 01B	119.59	37.03		6.73	163.4	
506	5	506 (4BT1)	4 bed (150)	Type 01	155.66	63.15	29.98	2.25	251	
507	5	507 (PHT1A)	3 bed	Penthouse - Type 1A	125.33	51.42	53.14	6.26	236.2	Yes
601	6	601 (PHT1B)	3 bed	Penthouse - Type 1B	124	47.36	164.71	86.08	422.2	Yes
602	6	602 (3BT1B)	3 bed	Type 01B	119.59	32.39		6.67	158.7	
603	6	603 (3BT1B)	3 bed	Type 01B	119.59	37.03		6.73	163.4	
604	6	604 (PHT2)	3 bed	Penthouse - Type 2	132.04	151.93	27.85	36.46	348.3	Yes
701	7	701 (PHT1A)	4 bed	Penthouse - Type 1A	195.65		185.26	62.68	443.6	Yes
702	7	702 (PHT1A)	3 bed	Penthouse - Type 1A	125.52	6.75	148.39		280.7	Yes















Would you like to experience the magic of Cyprus? We are glad to invite you for a property tour, and you do not have to buy — you can decide on the spot and for some reason, we believe you will certainly find a house of your dream!

During your stay in Cyprus, you will have a property and lifestyle expert that speaks your language, who will introduce you to the country, demonstrate its clear advantages

and show carefully selected properties based on your requirements and budget.

We will offer you special rates for accommodation in the best luxury apartments, villas and hotels of the island, and we will organize your transfer from the airport. As part of our hospitality package, **we will compensate you for 4 nights and the airport transfer if you buy a property through us.**



Elegance package

EVERY PROPERTY IS DELIVERED WITH THE SIGNATURE TOP STANDARD FINISHES:

- Fully completed finishings
- Semi-solid parquet floors in each room
- Marble floor and walls in the toilets and bathrooms
- High ceilings (3.15 m)
- Security and fireproof entrance doors
- Intercom system
- Provisions for water heated floors
- Provisions for central VRV conditioning
- High-standard sanitary ware from European brands
- Thermal aluminum window frames with double glazing
- High-standard kitchen cabinets from Italy
- High-standard wardrobes from European brands
- Soft closers
- Door stoppers
- Penthouses enjoy private roof terraces with pools

NOTE: movable furniture, home appliances & interior items are extras



Immigration

RESIDENCY PERMIT

UNIQUE CYPRUS PERMANENT RESIDENCY FOR PROPERTY BUYERS

- Life-long validity
- For all family members including children and parents
- Possibility to own a business in Cyprus

Buying property in Cyprus allows the buyer to obtain a permanent residence permit. We offer an “A to Z” service for non-EU citizens seeking residency in Cyprus by means of buying a property.

To be granted a life-long (permanent) residence permit in Cyprus, the applicant needs to purchase a new property or two new properties from the same developer with a total price of 300 000 Euros excluding the VAT. At the time of submission of the application, 200 000 Euros (excluding the VAT) must be transferred in settlement of the property and the contract of sale must be registered at the Lands office. The issuance of Cyprus permanent residence permits takes about 2 months and covers all family members, including financially dependent children under 25 years old. A Cyprus residence permit allows the holder to stay in Cyprus all year round.

CITIZENSHIP IN CYPRUS

EUROPEAN CITIZENSHIP THROUGH INVESTMENT IN CYPRUS PROPERTIES

- Minimum investment: 2 mIn EUR
- The investment may be sold in 3 years
- Visa-free residency in any European country
- Visa-free travels to more than 158 countries

BENEFITS OF CYPRIOT CITIZENSHIP

- The holder of a Cypriot Passport, as a European Union Citizen, can enter, reside, study and work in the European economic area (European Union, Iceland, Liechtenstein, Norway and Switzerland) without a visa.
- Ease of travelling abroad: Cypriot passport holders are entitled to travel visa free to more than 158 countries due to the EU citizenship, as well as a number bilateral and multilateral conventions.
- Cyprus allows dual citizenship, a factor that offers an effective tool for international tax planning and provides financial privacy to the passport holder.
- Freedom to study in European universities paying lower tuition fees.
- No residency requirements are imposed on citizens.

